

# *IANR All Hands Meeting*



**September 29, 2020**

***IN OUR GRIT, OUR GLORY™***





THE CASNR

# **CHANGE MAKER**

COMPETITION

## **How Do You Want to Make a Difference in the World?**

SPONSORED BY THE COLLEGE OF AGRICULTURAL SCIENCES AND NATURAL RESOURCES (CASNR)

**Here is your chance to share what you will tackle to  
leave your mark on the world.**

Do you have an idea for making a difference in the world? Pitch us your idea in a 2-minute video. If your idea is selected you could earn a CASNR scholarship and have the chance to work directly with mentors on tackling your big idea.

# LPS partners with UNL for newest focus program at Northeast



Help light the **FEWS<sup>2</sup>**  
Food, Energy, Water & Societal Systems









## Perdue says innovation, collaboration key to agriculture's future

U.S. AG SECRETARY TOURS INNOVATION CAMPUS, PARTICIPATES IN PANEL DISCUSSION

## University receives \$5 million gift to create program on water, climate and health



August 26, 2020

Alumni, News Release, UNL, UNMC







# Omaha World-Herald

OPINION

## **Editorial: Nebraska State Fair's focus on youth is the right priority**

**T**he coronavirus has created big headaches for this year's Nebraska State Fair, but give fair leaders and supporters credit. They have the right priorities for the 2020 event in Grand Island. It will be a greatly slimmed down fair, starting Friday, that concentrates on youth participants.

Those children and teenagers — the future of Nebraska agriculture — have devoted enormous energy and attention to raising their animals for State Fair competition. The fair, in its 151st year, will not let them down. The fair's annual youth events also include competitions in skills such as cooking and identification of insects and grasses.



### THRIVING INDEX

The [Thriving Index](#) is an interactive comparison tool for benchmarking, identifying and analyzing trends in rural Nebraska.



### RURAL FELLOWS

Through [Rural Fellows](#) projects, students live and work in communities across Nebraska helping them solve problems and address important issues.



### RURAL POLL

The annual [Rural Poll](#) surveys rural Nebraskans' asking questions about their perceptions on quality of life and policy issues.



### SOURCELINK®

The [SourceLink® Nebraska](#) connects Nebraskans with programs and services for entrepreneurship, business, community and economic development.



### COMMUNITY ENGAGEMENT



PEOPLE ATTRACTION & RETENTION



### LEADERSHIP & COMMUNITY CAPACITY BUILDING



ECONOMY & ENTREPRENEURSHIP



### PLACEMAKING



REGIONAL FOOD SYSTEMS

# Welcome New Faculty Since January All Hands Meeting



**Connor Biehler**



**Georgina Bingham**



**Brianna Buseman**



**Kaitlin Chapman**



**Tanya Crawford**



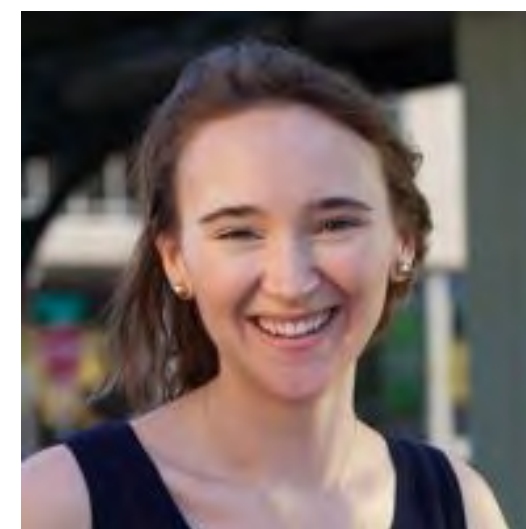
**Mary Drozd**



**Jordan Grummert Rasmussen**



**Christina Hoyt**



**Kara Kohel**



**Mary Moser**



# Welcome New Faculty Since January All Hands Meeting



**Charles Chioma Nwaizu**



**Jeff Price**



**Bhanwar Lal Puniya**



**Sabrina Ruis**



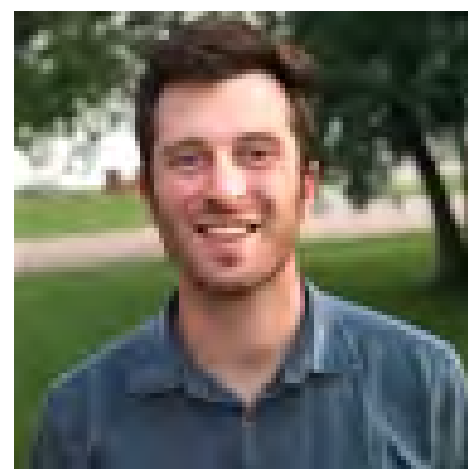
**Hannah Sunderman**



**Stephanie Thorson**



**Jason Tuller**



**Daniel Uden**



**Ivan Jose Vechetti**



**Mark Vrtiska**



**Ruth Woiwode**



**Yijie Xiong**



**Thank you to those who have retired.  
Congratulations on an amazing run! We  
appreciate you, your impacts, collegiality, and  
friendship!**

**We wish you well and look forward to  
celebrating when we can gather.**

## Promoted/Tenured



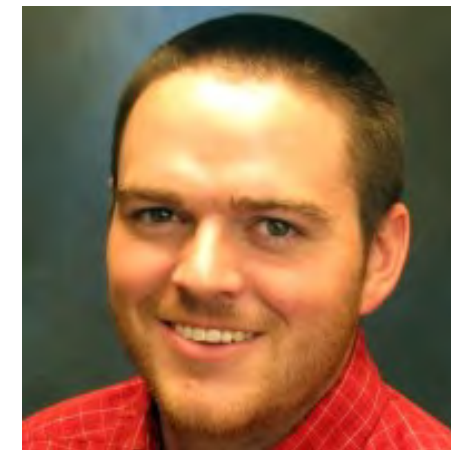
**Angela Abts**



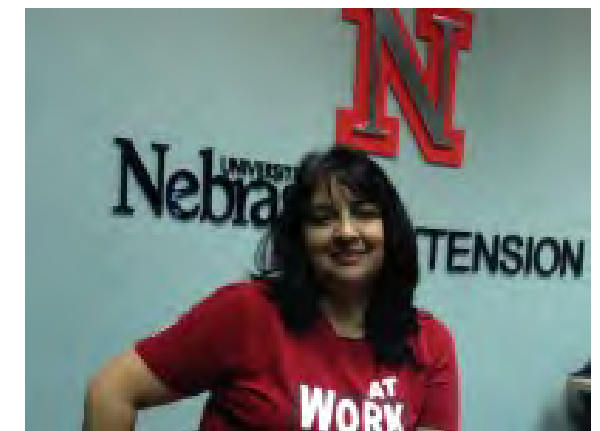
**Jiri Adamec**



**Tracy Anderson**



**Jack Arterburn**



**Sandra Barrera Fuentes**



**Ashley Benes**



**Megan Burda**



**Daniel Ciobanu**



**Kimberly Clark**



**Kimberly Cook**



**Jaclynn Foged**



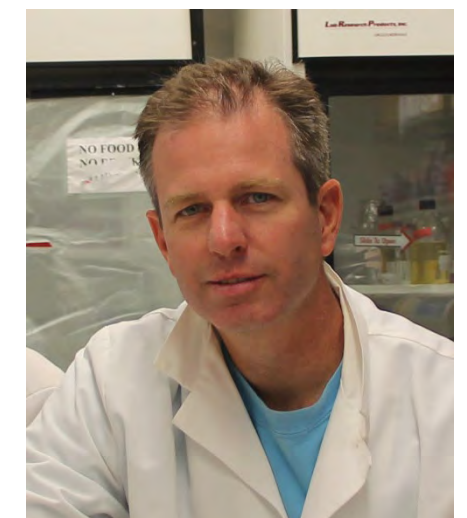
**Hernan Garcia-Ruiz**



**Jessica Groskopf**



**Jennifer Hansen**



**Edward Harris**



## Promoted/Tenured



**Rhonda Herrick**



**Terri James**



**Elizabeth Janning**



**John Kammermann**



**Lisa Karr**



**Kaytlyn Kennedy**



**Oleh Khalimonchuk**



**Elizabeth Exstrom**



**Eric Knoll**



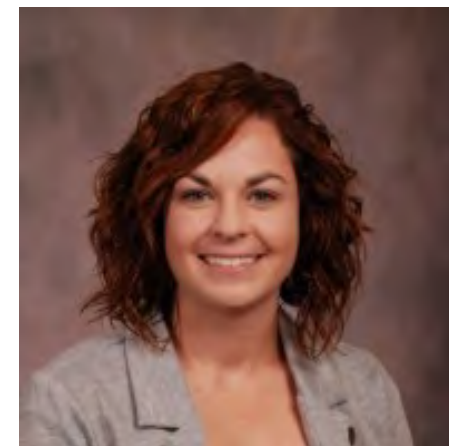
**Julia Kreikemeier**



**Erin Laborie**



**David Lott**



**Lena Luck**



**Gina Matkin**



**Lia Nogueira-Rodriguez**





## Promoted/Tenured



**Aaron Nygren**



**Jay Parsons**



**Jessica Petersen**



**Julie Peterson**



**Christopher Proctor**



**Sarah Roberts**



**Rebecca Roston**



**Randy Saner**



**Paul Springer**



**Jackie Steffen**



**Rick Stowell**



**Mark Wilson**



**Jennifer Wood**



**Samuel Wortman**



**Dustin Yates**



**Andrew Zimbhoff**



**Marjorie Kostelnik**

Professor, Agricultural Research Division  
**Distinguished Achievement in Agriculture**  
Gamma Sigma Delta

**James Schnable**

Associate Professor, Agronomy & Horticulture  
**ASPB Early Career Award**  
American Society of Plant Biologists  
**NAPPN Early Career Award**  
North American Plant Phenotyping Network

**Chris Calkins**

Professor, Animal Science  
**Meat Industry Hall of Fame – 2019 Class**  
Meat Industry Hall of Fame Board of Trustees

**Edgar Cahoon**

Professor, Biochemistry  
**Fellow**  
American Association for the Advancement of Science

**Thomas Clemente**

Professor, Agronomy & Horticulture  
**AAAS Fellow**  
American Association for the Advancement of Science

**Paul Black**

Professor, Biochemistry  
**2020 Award for Exemplary Contributions to Education**  
American Society for Biochemistry and Molecular Biology

**Tami Brown-Brandl**

Biological Systems Engineering  
**ASABE Fellow**  
ASABE

**Joe Louis**

Associate Professor, Entomology  
**Early Career Innovation Award**  
Entomological Society of America  
**NSF Faculty Early Career Development (CAREER) Award**  
National Science Foundation



## **Lisa Franzen-Castle**

Associate Professor, Nutrition & Health Sciences

### **Early Professional Achievement Award**

Society for Nutrition Educator and Behavior

## **Angie Pannier**

Professor, Biological Systems Engineering

### **Presidential Early Career Award for Scientist and Engineers**

U.S. White House Office of Science and Technology Policy

## **Yan Xia**

Professor, Child, Youth and Family Studies

### **Completion Certificate 2018-2019 Fulbright**

**Distinguished Chair in Social Sciences, China, Bureau  
of Education and Cultural Affairs**

### **Meat Industry Hall of Fame – 2019 Class**

U.S. Department of the State and Fulbright Scholarship  
Board

## **Cody Creech**

Assistant Professor, Panhandle Research & Extension Center

### **2019 CSSA Early Career Award**

Crop Science Society of America

## **Deepak Keshwani**

Associate Professor, Biological Systems Engineering

### **2019 A.W. Farrell Young Educator Award**

American Society of Agricultural and Biological  
Engineers (ASABE)

## **Andrew Benson**

Professor, Food Science & Technology

### **Fellow, American Academy of Microbiology**

American Society of Microbiology

## **Janos Zempleni**

Professor, , Nutrition & Health Sciences

### **Osborne and Mendel Award, 2019**

American Society for Nutrition

## **Jack Whittier**

Professor, Panhandle Research & Extension Center

### **ASAS Fellow Award**

American Society of Animal Science



## 2019 Awards at a glance:

- Best Paper – 3
- Best Poster/Presentation Award – 2
- Career Award – 11
- Extension Program Award – 24
- Fellow – 6
- Fulbright -1
- Other Presentation Award – 3
- Other Publication Award – 7
- Research Award – 6
- Service Award – 7
- Standards Development Award – 1
- Teaching Award - 1



# New Leaders Since January All Hands Meeting



**Don Becker**  
Biochemistry



**Jeff Bradshaw**  
PHREEC, Interim



**Tom Burkey**  
CASNR



**Cheryl Burkhart-Kriesel**  
Rural Prosperity NEB



**Larry Gossen**  
NCTA



**Scott McVey**  
SVMBS



**Michael Merten**  
CYAF



**Jen Mize Nelson**  
NVC, Interim



**Mark Svoboda**  
NDMC



**Dave Varner**  
NE Extension, Interim



**Karrie Weber**  
UG Microbiology Program



## Total Positive Cases

# 44,578

## People Tested: Not Detected

# 407,979

\*Excludes inconclusives and out of state residents

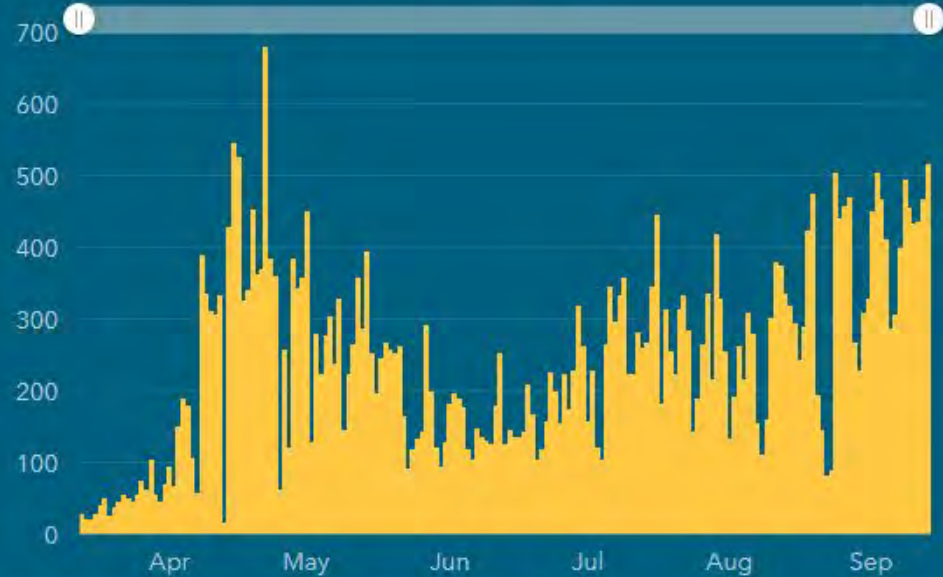
## People Tested

# 452,862

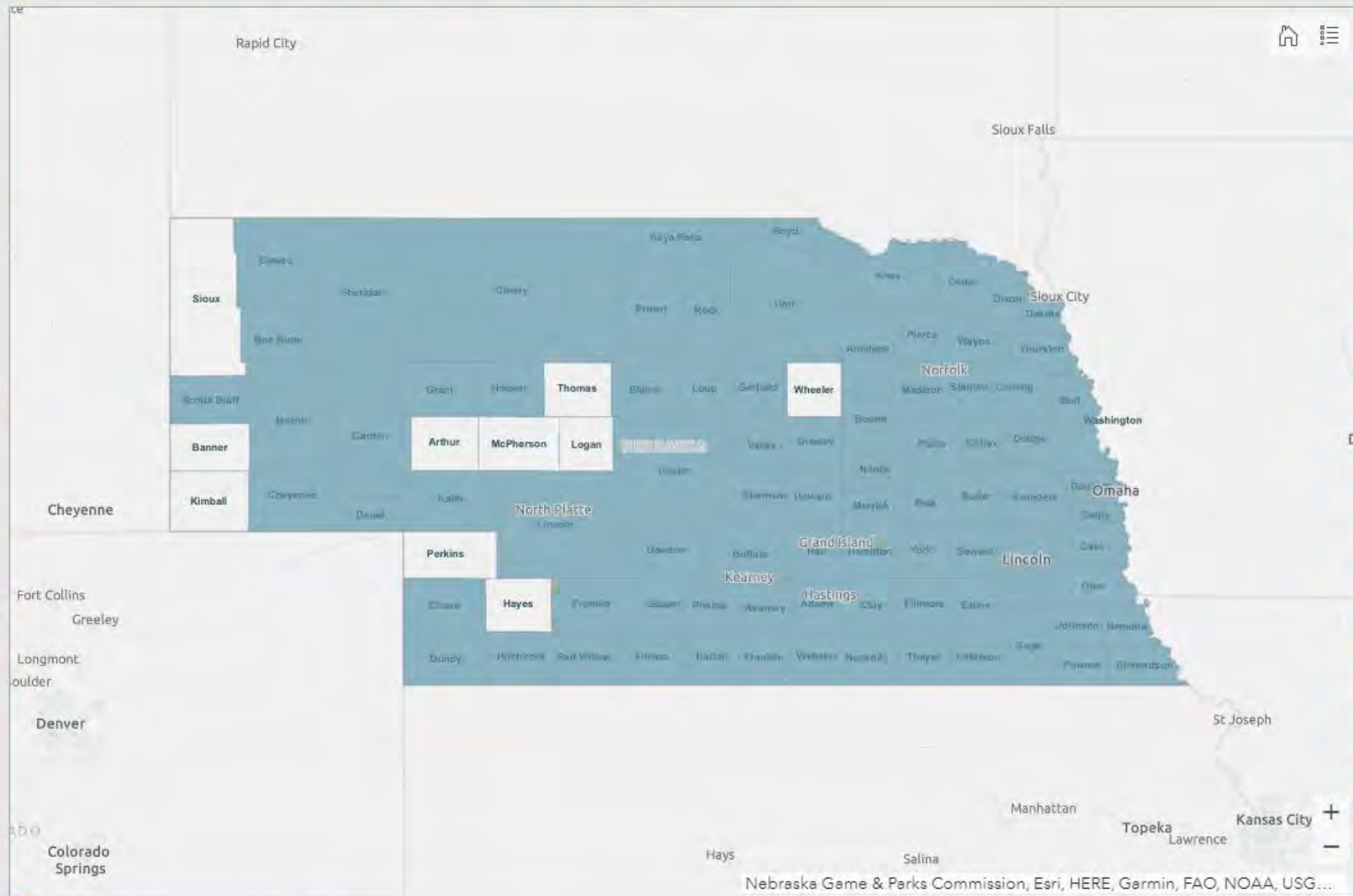
## Total Tests

# 611,080

New positive cases by date results were received



% Positive | Positives by Date | Total Positives | Tests by Date | Total Tests



Number of positive tests by county in the last 14 days

- 1,602 Douglas
- 1,130 Lancaster
- 509 Sarpy
- 198 Buffalo
- 187 Dodge
- 150 Platte
- 145 Saunders
- 129 Dakota
- 102 Madison
- 95 Hall
- 89 Adams
- 85 Gage
- 80 Wayne
- 80 Washington
- 77 Knox
- 69 Saline
- 47 Cuming
- 47 Cass
- 45 Holt
- 44 Lincoln
- 42 Seward
- 42 Colfax
- 40 Boone

Last Updated: 9/28/2020, 6:15 PM CDT

Last 14 Day Positive Cases | Total Positive Cases | Hospital Capacity | Positive Cases | Hospitalized Cases | Recoveries | Deaths | Race | Ethnicity | Turn Around Time | About the Data

Contact Nebraska Department of Health and Human Services (DHHS)

<http://dhhs.ne.gov/coronavirus>

Information Line: (402) 552-6645

Data are representative of Nebraska residents, are provisional and data reported by the local health department should be considered the most up to date.

# NEBRASKA

Good Life. Great Mission.

DEPT. OF HEALTH AND HUMAN SERVICES



# COVID-19: NEBRASKA RESPONDS



## Home

[Latest Updates](#)

[Task Force and Committees](#)

[Guiding Framework](#)

## Health & Safety

[Quarantine Information for Students](#)

[Group Quarantine Guidelines](#)

[Isolation Guide for Students](#)

## Testing, Reporting & Contact Tracing

[Free On-Campus Testing](#)

[Positive Test Reporting](#)

[Contact Tracing](#)

[COVID-19 Dashboard](#)

## Information For ...

[Students](#)

[Instructors / Researchers](#)

[Employees](#)

[Prospective Students](#)

## Facilities & Events

## FAQ / Contact Us



## ***PROTECT YOURSELF AND OUR HUSKER COMMUNITY***

We're Cornhusker Committed to wearing a mask, washing our hands, practicing social distancing, avoiding large groups, and getting tested.

[REGISTER FOR A TEST](#)

[REPORT POSITIVE TEST](#)





*Pause for questions from the Zoom Chat*





# Diversity and Inclusion at IANR

## IANR's Commitment to Diversity and Inclusion

We value the contributions of each person and strive to make each interaction matter. Our strategic direction related to diversity and inclusion is closely aligned with and contributes to the [University of Nebraska-Lincoln's N2025 strategic plan](#). We are committed to engaging in practices that demonstrate the value of diversity and inclusive excellence.

We recognize that when we value diversity through inclusive practices the results are creativity, innovation and a sense of belonging—precisely what is needed to tackle the grand challenges being addressed by the more than 1,900 faculty and staff and more than 3,100 students of the Institute.

### KEYS TO CREATING AN INCLUSIVE AND WELCOMING IANR

- [Be intentional](#)
- [Be accountable](#)
- [Be reflective](#)

EMAIL US

# IANR Diversity and Inclusion Advisory Group



**Simanti Banerjee**  
Agricultural Economics



**Michael Bergland-Riese**  
NE Extension



**Brytany Gama**  
ALEC



**Jackie Guzman**  
NE Extension EZ1



**Holly Hatton-Bowers**  
CYAF



**Angi Heller**  
Engagement Zone 8



**Lisa Karr**  
Animal Science



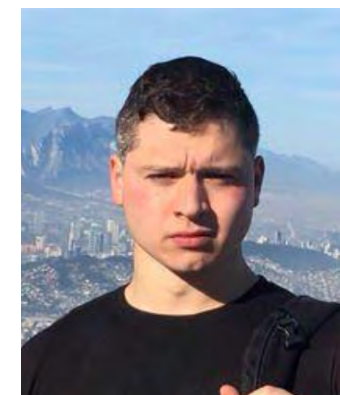
**Martha Mamo**  
Agronomy & Horticulture



**Bobby Skates**  
WCREC



**Ashley Stengel,**  
Complex Biosystems



**David Velazco**  
Animal Science



**Ana Maria Velez**  
Entomology

**First meeting:**  
Friday, Oct. 9,  
2-3:30 p.m





# Minorities in Agriculture, Natural Resources, and Related Sciences

Our Mission at MANRRS is to promote academic and professional advancement by empowering minorities in agriculture, natural resources, and related sciences.



**JOIN US!**

MINDITIES IN  
AGRICULTURE, NATURAL  
RESOURCES AND  
RELATED SCIENCES

**SEPT. 24  
2020 @ 11AM**

INFORMATIONAL MEETING  
VIA ZOOM  
SCAN THE QR CODE TO JOIN!



QUESTIONS? EMAIL:  
MANRRS.UNL@YAHOO.COM

# We Are Nebraska

It's happening! Don't miss a

# **REVOLUTIONARY THEATRE EXPERIENCE**

with the WE ARE NEBRASKA interns.

See the next generation of diverse and inclusive leaders tell their **stories that must be told**—along with music, dance and video expressions!

**BOLD, EMOTIONAL & ENTERTAINING**

Wed., Oct. 7 | Showtimes at 4:30pm & 7:30pm!

Lied Center for Performing Arts, 12<sup>th</sup> & R Streets

Free and open to the public | Doors open 30 minutes prior to each show

Seating is first come, first serve | Single seating and distanced

Must wear cloth mask | Sanitizer Provided



Sponsored by Hixson-Lied College of Fine and Performing Arts, Student Affairs, Diversity and Inclusion, College of Business, College of Engineering, College of Law, Office of Research & Economic Development, Institute of Agriculture and Natural Resources, and College of Agricultural Sciences and Natural Resources

# IANR Staff Liaison Council



**Christina Franklin**



**Pam Joern**



**Sarah Plautz**



**Tai Pleasant**



**Angela Rushman**



**Becky Carter**



**Marissa Kemp**



**Casey Lundberg**



**Tracy Zimmerman**





*Pause for questions from the Zoom Chat*



# NU to cut \$43M in response to COVID-19; Carter outlines 3-year budget plan

Chris Dunker Jun 19, 2020 Updated Aug 27, 2020



**T**he University of Nebraska will seek to cut \$43 million from its budget over the next three years as it aims to steady a turbulent financial situation caused by the coronavirus pandemic.

President Ted Carter said the university system will enact “significant permanent cuts” to NU’s state-aided budget, which is funded through state appropriations and tuition revenue, to address a potential 10% drop in the number of students enrolled this year.

That’s less than the 15% enrollment decline many other colleges and universities are anticipating but would still result in a dramatic loss of revenue.

“I’m cautiously optimistic,” Carter said at a news conference Friday ahead of the release of next week’s NU Board of Regents’ agenda. Regents will meet remotely on June 26.

NU already absorbed a \$50 million loss this year after COVID-19 forced the university system to close its campuses in Lincoln, Omaha and Kearney and refund some money to students.





## ***NU SYSTEM APPROVED STATE-AIDED BUDGET***

- \$43M university-wide state-aided reduction in next three fiscal years
- Equates to 4.3% overall
  - UNL - 5.5 percent (before adding carry-forward deficit)
  - UNO - 3.9 percent
  - UNK - 3.9 percent
  - UNMC - 2.9 percent
- No salary increases in FY21 for non-union campuses
- Salary “tools” as approved by BOR (voluntary FTE reduction, furlough)
- NUCredits elimination (over \$130K)



## ***NU SYSTEM APPROVED BUDGET***

### Assumptions:

- Continued funding from state in second year of biennium (FY21) and 2% increases in FY22 and FY23
- Conservative enrollment projections for all campuses
- Salary increases of 1.5% and 3% in FY22 and FY23 for non-union campuses.
- No tuition increases through FY23 unless State funding changes
- Funding for Nebraska Promise and President and Chancellor Strategic Priorities
- Modest increases in general operations and utilities in FY22 and FY23.



## ***UNL BUDGET***

5.5% calculated reduction over 3-year period (\$25.8M)

Add:

- Carry-forward deficit of (\$9.96M)
- New expenses (\$2.54M) (P&T, insurance, O&M, etc.)

Total UNL budget adjustment required (\$38.3M) or 8.2%



**University of Nebraska-Lincoln**  
**State-Aided Operating Budget - Calculated Budget Reductions**  
**FY 2021 thru FY 2022, FY2023**

VC	FY21 Target Reduction	FY22 Target Reduction <sup>2</sup>	FY23 Target Reduction <sup>2</sup>	3-Year Cumulative Reduction	<i>Estimated 3-Year %</i>
<i>UNL Annual Deficit</i>	<i>\$ 15,708,995</i>	<i>\$ 8,797,661</i>	<i>\$ 13,747,528</i>	<i>\$ 38,254,184</i>	
<i>Percent Annual Reduction Required</i>	<i>3.4%</i>	<i>1.9%</i>	<i>3.0%</i>	<i>8.2%</i>	
Chancellor Base Budget <sup>1</sup> <i>University Fixed Costs</i>					
Chancellor Allocable Budget/Reduction	\$290,060	\$162,445	\$253,842	\$706,346	8.2%
EVC CAO <sup>3</sup>	\$9,960,010	\$4,720,512	\$7,376,434	\$22,056,955	9.1%
VCIANR	\$ 3,563,463	\$2,555,431	\$3,993,204	\$10,112,097	7.7%
VCORED	\$ 137,327	\$98,480	\$153,889	\$389,696	7.7%
VCBF	\$ 1,733,010	\$1,242,776	\$1,942,005	\$4,917,791	7.7%
VCSA	\$ 25,125	\$18,018	\$28,155	\$71,297	7.7%
<b>Total</b>	<b>\$15,708,995</b>	<b>\$8,797,661</b>	<b>\$13,747,528</b>	<b>\$38,254,184</b>	<b>8.2%</b>

**CALCULATED BUDGET REDUCTIONS**



# High-level Summary - Proposed IANR Reduction Plan to Chancellor

IANR Reduction Target = **\$10,112,097**

**FY21** (\$3,563,463) / **FY22** (\$2,555,430) / **FY23** (\$3,993,204)

- 10% Administrative Reduction – VC IANR, CASNR, ARD, Extension - **~\$1.9M** – elimination of 6 administrative positions and reduction of operating budgets
- Elimination of open lines and conversion to non-state funds - **~\$6.3M**
  - Faculty positions (all types) - ~\$3.5M – vacant and projected attrition
  - Vacant staff positions **proposed by units** - ~\$1.1M
  - Research support staff **proposed by units** – elimination of open lines and transitioning of others to non-state sources - ~\$1.7M
- Program Reduction/Realignment - **~\$0.6M** / Proposed elimination of the ARD and Extension state-aided support for the Department of Textiles, Merchandizing, Fashion Design (TMFD) / Proposed elimination of the CASNR Hospitality Restaurant Tourism Management (HRTM) degree program
- Reduce use of student remissions by 10% - **~\$1.3M** / replace remissions with funded scholarships, fellowships, and grant funding



# APC Budget Hearings - Phase 2 Reductions

The [Academic Planning Committee](#) (APC) announces that hearings will be held to provide the Committee with additional information on the programs being proposed for elimination or reduction as part of the FY2021 budget reduction process. The [Phase 2 reduction proposals](#) were announced to the campus on September 3, 2020, and the hearings are scheduled as follows:

## 2021 Phase Two Budget Hearings

DATE	TOPIC	REGISTRATION DEADLINE
October 7, 2020	Elimination of the undergraduate Dance Program within the Glenn Korff School of Music in the Hixson-Lied College of Fine and Performing Arts	12:00 Noon (CDT), October 5, 2020
October 14, 2020	Elimination of the Department of Textiles, Merchandising and Fashion Design within the College of Education and Human Sciences	12:00 Noon (CDT), October 12, 2020
October 21, 2020	General hearing on any proposed Phase 2 budget reduction including the elimination of the Masters in Athletics Administration in the College of Business and the Hospitality Management Program in IANR	12:00 Noon (CDT), October 19, 2020

Each hearing will begin at 3:00 p.m. and will be held virtually via Zoom.

### To Present Testimony at the Scheduled Budget Hearing: Registration of Intent to Appear

In order to coordinate the hearing schedule, the APC requires that all individuals wishing to respond to the proposals in person are required to register their intent to appear at <https://go.unl.edu/hearing>. This





*Pause for questions from the Zoom Chat*



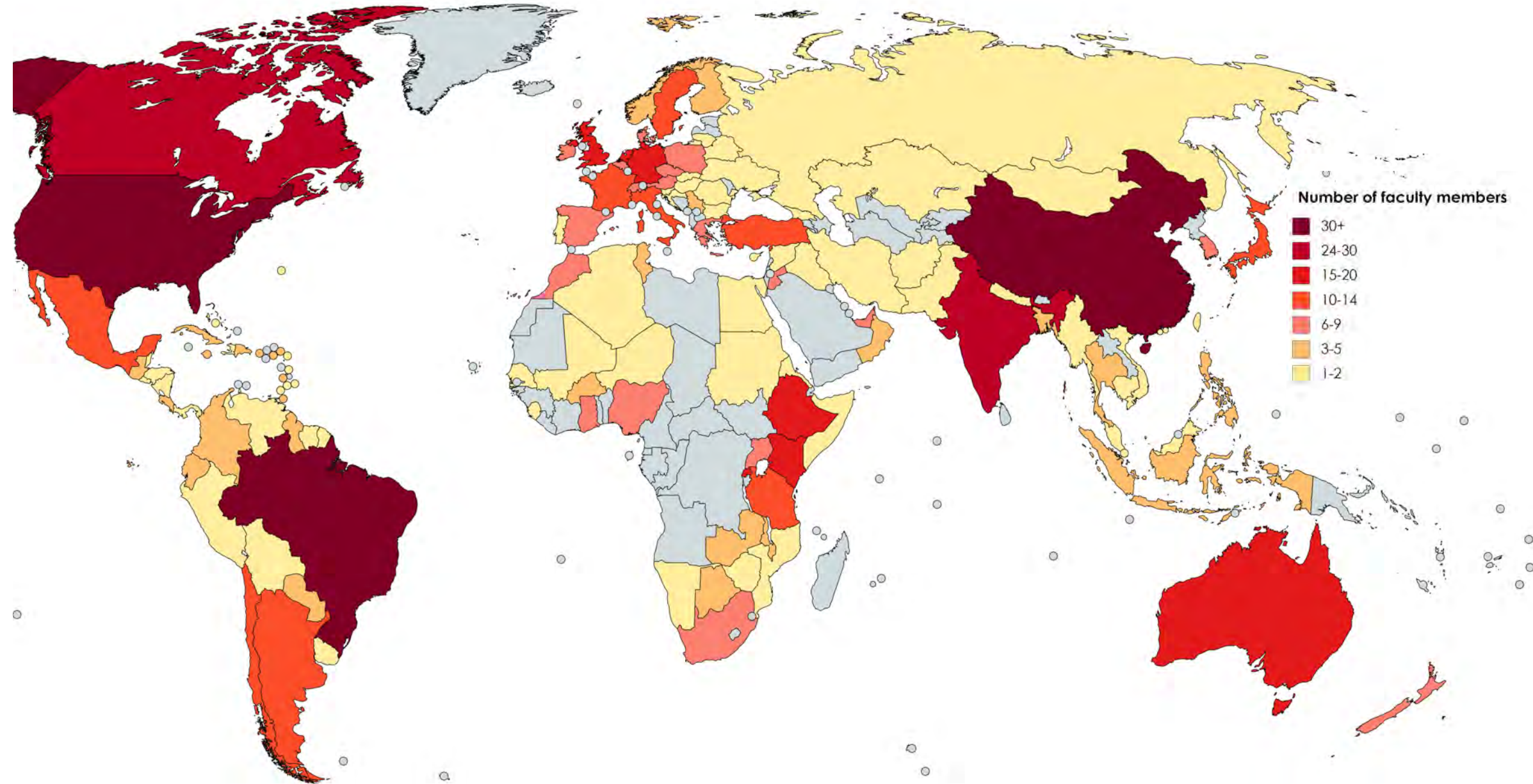
# IANR's Global Engagement in Research Innovation, Education & Engagement (2019-2020)

**177** Faculty (~50%)  
engaged in  
**123** countries

**25** Countries with  
affiliate faculty/fellows

**475+** International  
students from  
**60+** countries

**12** Education abroad  
programs



Created with mapchart.net





# Research, Discovery & Innovation

# Education, Outreach & Engagement



Archie Clutter



Liana Calegare



Jon Kerrigan



Tiffany Heng-Moss



Sylvana Airan



Tala Awada



Brianne Wolf



Kaitlyn Waller



Chris Ebbers



Peter McCormick



Jill O'Donnell

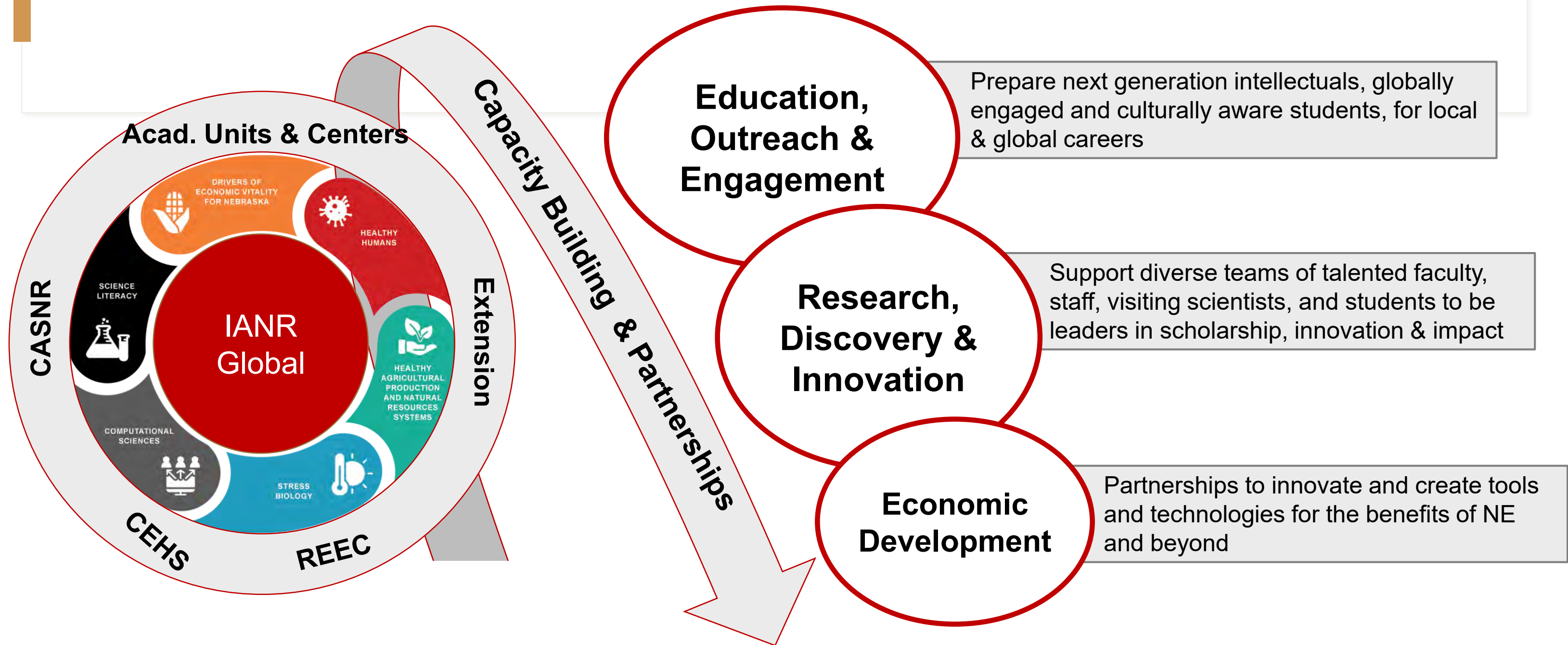


Rich Bischoff



Dave Varner

# Amplify and Augment Partnerships to Ensure Resilient Food Systems and a Healthy Global Future



# Get in touch!

Liana Calegare: [lcalegare2@unl.edu](mailto:lcalegare2@unl.edu)

Jon Kerrigan: [jon.kerrigan@unl.edu](mailto:jon.kerrigan@unl.edu)

Brianne Wolf: [bwolf4@unl.edu](mailto:bwolf4@unl.edu)

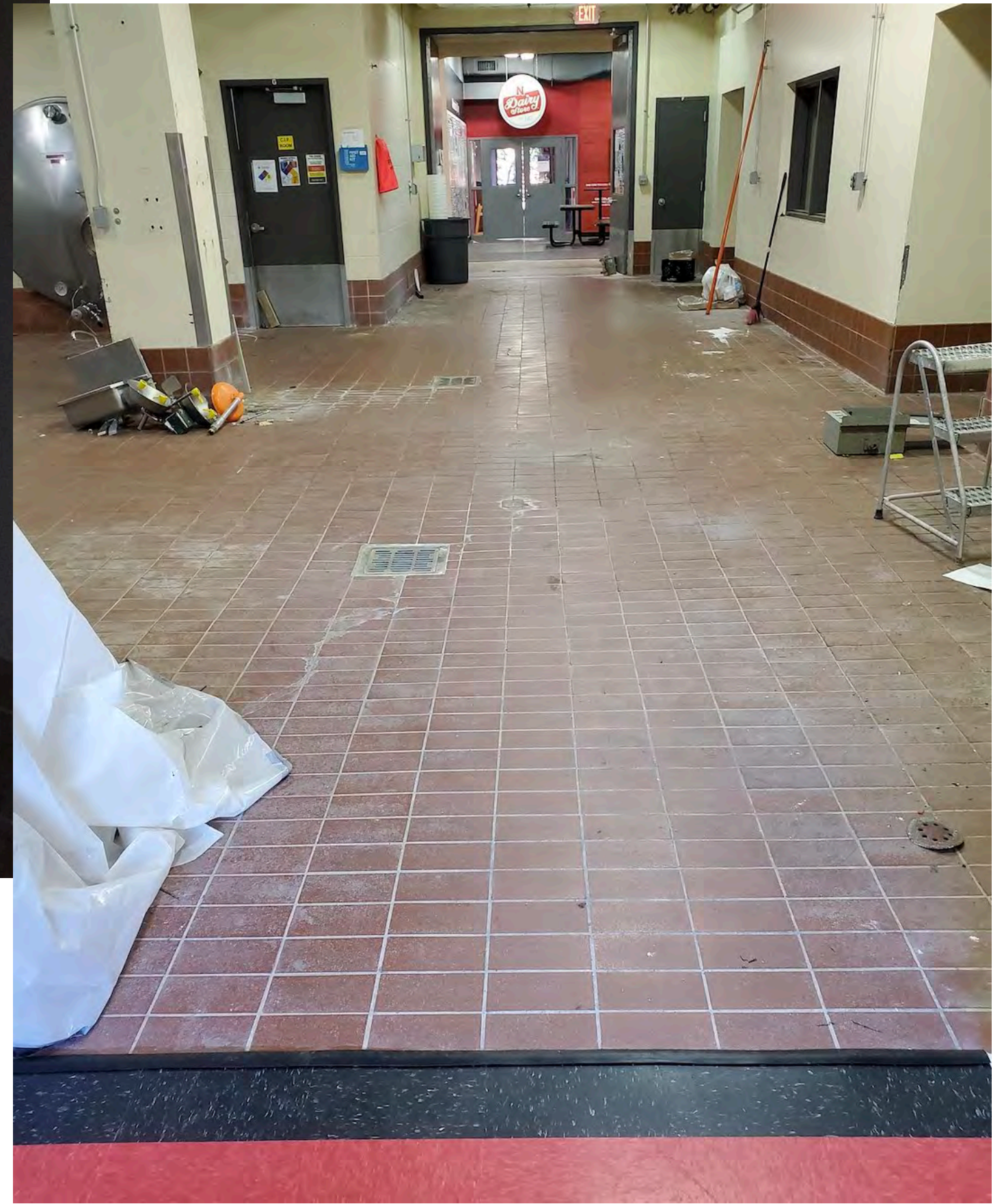
[ianrglobal@unl.edu](mailto:ianrglobal@unl.edu)

<https://ianr.unl.edu/global-engagement>

# Wake-Dance

Artist – John Raymond Henry





East Campus Collaboration Space:  
Coming this fall!



**On the horizon...**



- NU's BOR has authorized IANR to move forward with formal planning and construction of the Feed Yard Innovation Center at ENREC - ~\$4.9M.
- Nebraska 'Smart Farms' into the next phase.
- *'The 2017 Economic Impact of the Nebraska Agricultural Production Complex'* released on 01 OCT.
- [Rural Prosperity Nebraska](#) – next chapter of NU's commitment to the success of rural people and communities – [SourceLink](#) launched, [Thriving Index 2.0](#) released, actively recruiting 200 [Rural Fellows](#) and 100 local communities for Summer 2021, and will soon be launching search for new director and Extension Program Leader within coming weeks.



- External review team is conducting review of IANR's network of Greater Nebraska locations and our Research, Extension, and Education Centers – exit session scheduled for 08 OCT.
- Update to 'An Atlas of the Sand Hills' commissioned – targeted release 2023 – coincides with IANR's 50<sup>th</sup> celebration.
- Searches for permanent Dean/Director of Nebraska Extension and the Director for the Panhandle Research, Extension, and Education Center slated to launch in first part of 2021.
- CYT Library at the Dinsdale Family Learning Commons to open in March 2021 – Miller Hall to be decommissioned and porch to ECU and landscaping to be completed.



# Zoom Chat Follow Up

