

IANR All Hands Meeting



September 24, 2019

IN OUR GRIT, OUR GLORY™



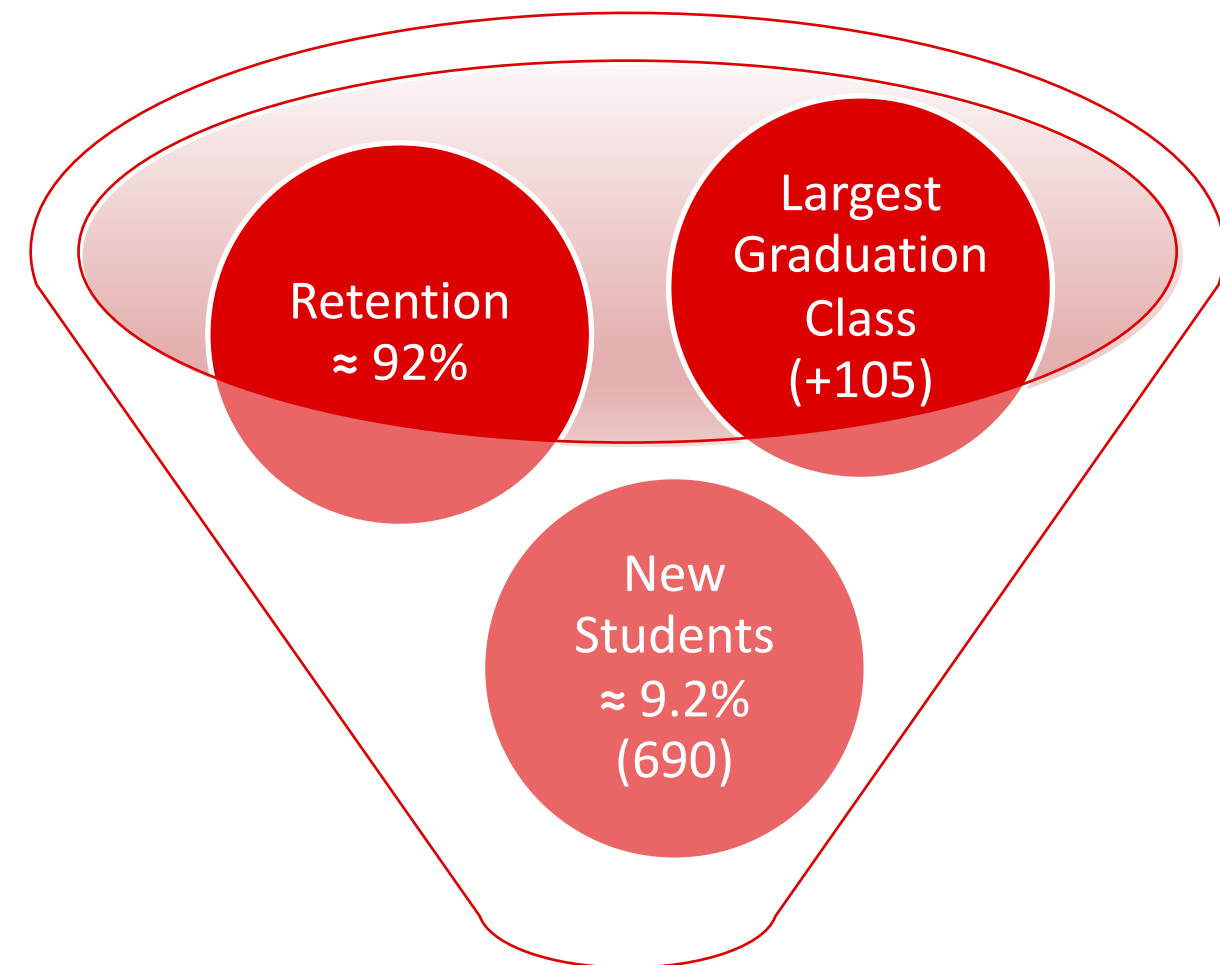
IANR
Community
Questions



Enrollment: 2019-20

Smart Enrollment Growth

- Holistic approach
 - Partnership driven
 - Competitive advantages/strengths
 - Focus on student success
- Total: 3,222 students
 - Undergraduate: 2,471 students
 - International students (+ 15.2%)
 - Graduate and professional: 751 students
 - 2019: 701 (- 3.1%; 23 students)
 - Student Credit Hour
 - 35,393 (+ 2.5%)



Enrollment: 2,471
(2% increase)

#ThisIsCASNR

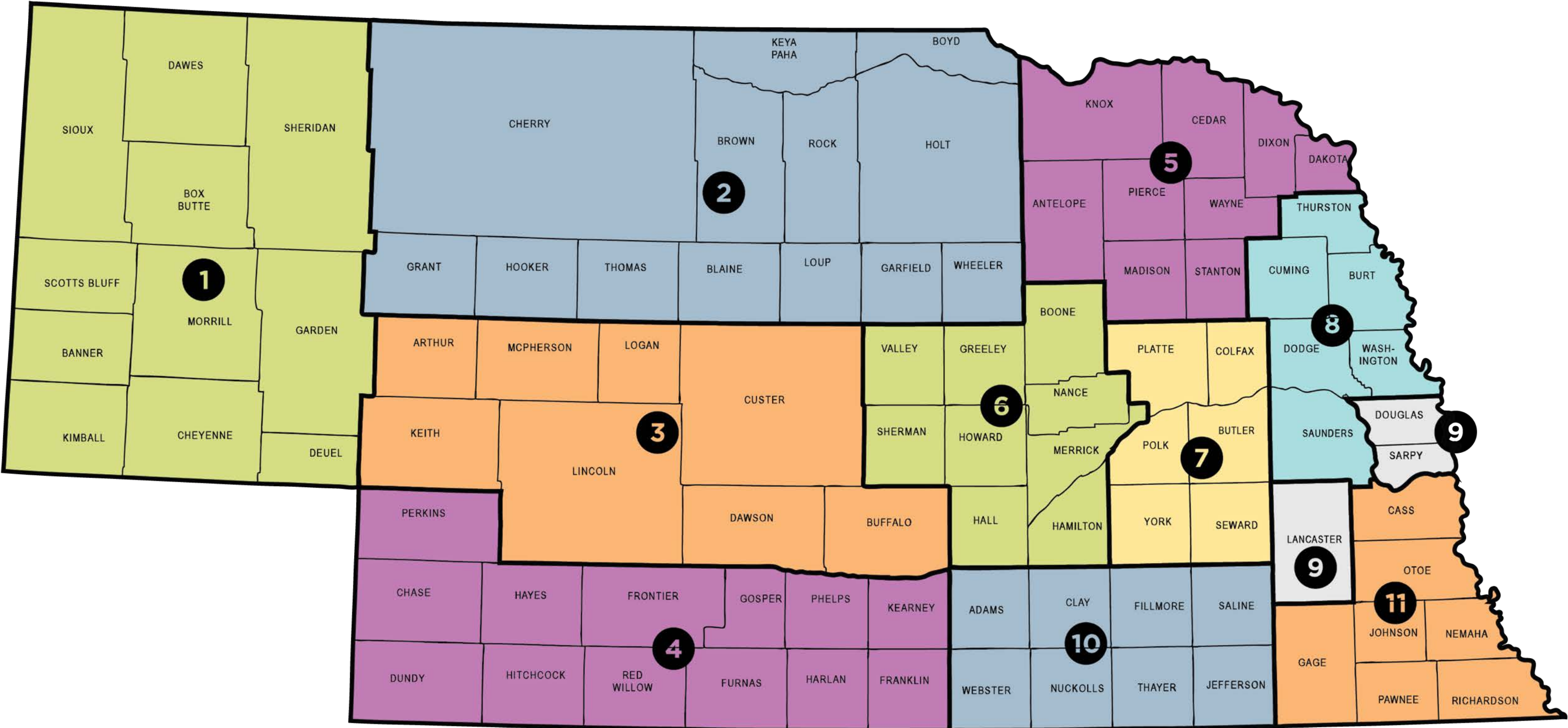
UNIVERSITY OF
Nebraska
NCTA | NEBRASKA COLLEGE OF
TECHNICAL AGRICULTURE







Engagement Zones





NEBRASKA



Our ITS Security efforts:

MINIMIZE RISK



284 M

Total Monthly Threats

INCREASE AWARENESS



102

Third-Party Assessments

EMPOWER USERS



22,000+

Endpoints Secured



10,000+

Two-Factor Users



1.3M

Identities Managed





Results of the February 2019 vote



Faculty Voting Results

Are you in favor of the revision to the IANR Bylaws to include an Institute-wide Promotion and Tenure Committee?



Tentative Proposal Timeline

September 30, 2019

Proposal for IANR Bylaws revision
brought for faculty vote

October 14, 2019

Ballot closes

No later than October 21st

Votes tallied and decision
announced



Tentative Proposal Timeline continued

October 29, 2019

Presented to Senate Executive Committee

November 5, 2019

Presented to Faculty Senate

December 3, 2019

Proposal brought before Faculty Senate for ratification



Tentative Implementation Timeline

January 2020

Nominations sought for
committee membership

February/March 2020

Voting for committee
membership

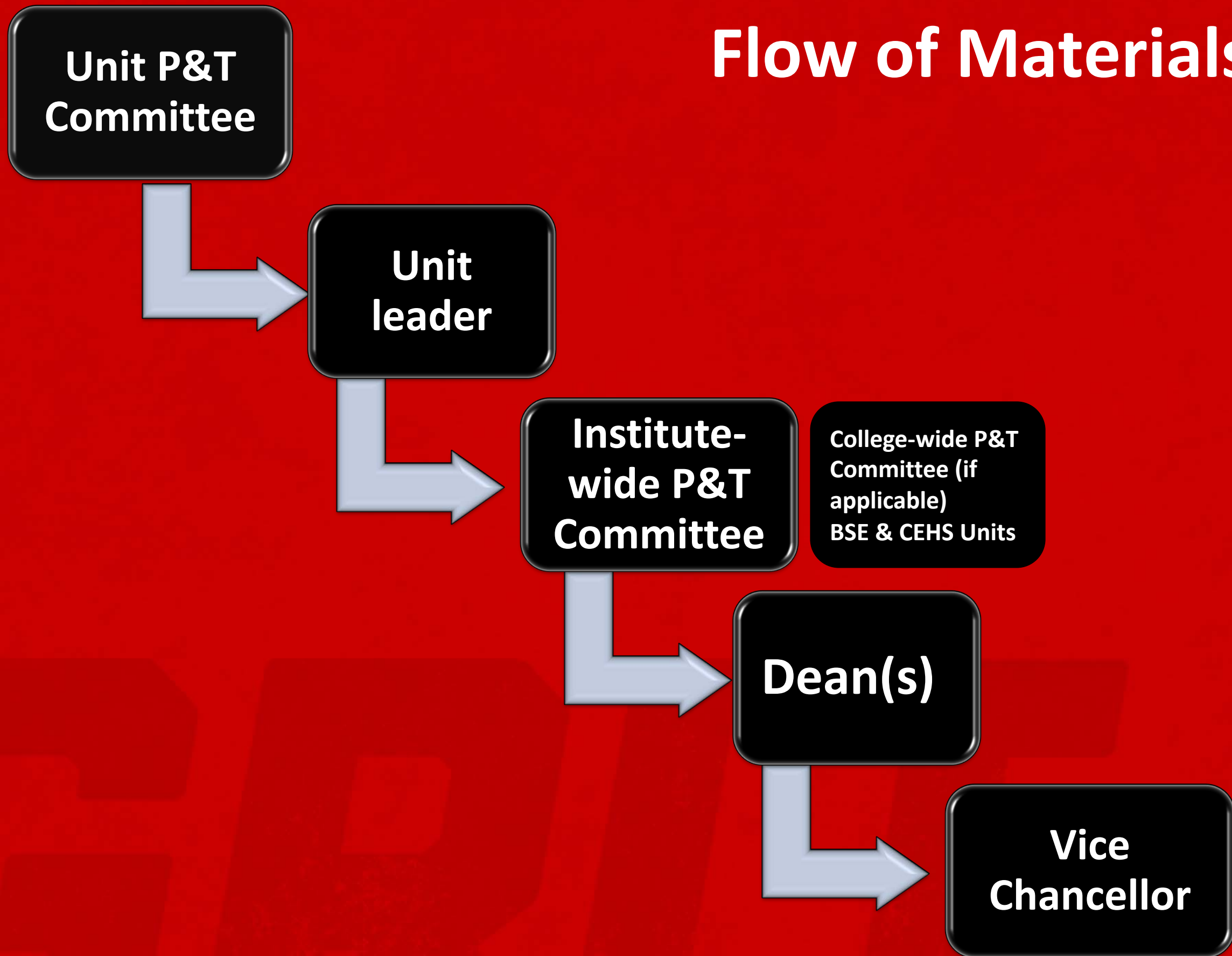
2020/2021 Academic Year

Committee functions





Flow of Materials





Timeline for Materials

November 15

Materials due to IANR VC Office

November 20

Materials available to Institute-wide P&T committee members

December 15

Committee meets to provide recommendations on materials for P&T

December 23

Reconsideration request materials due to committee

January 15

Institute-wide P&T committee meets for reconsideration requests

January 25

Materials are available for IANR Dean's review

Questions & Comments

<https://ianr.unl.edu/institute-wide-promotion-and-tenure-committee>

IANR Liaison Committee: ianrliaison@unl.edu

Rich Bischoff: rbischoff2@unl.edu



*Together, we are making a difference in
the lives of Nebraskans and people
worldwide.*



Newly Promoted and/or Tenured Faculty April 2019

Simanti Banerjee, promoted to assoc. professor and granted tenure

Donnia Behrends, promoted to extension educator

Andria Bianchini Huebner, granted tenure

Karly Black, promoted to associate extension educator

Humberto Blanco, promoted to professor

Kathleen Brooks, promoted to assoc. professor and granted tenure

Thomas Burkey, promoted to professor

Christopher Chizinski, promoted to assoc. professor and granted tenure

Ozan Ciftci, promoted to assoc. professor and granted tenure

Nathan Conner, promoted to assoc. professor and granted tenure

Jenny Dauer, promoted to assoc. professor and granted tenure

Joseph Dauer, promoted to assoc. professor and granted tenure

Gustavo Delhon, promoted to research professor

Dipti Dev, promoted to assoc. professor and granted tenure

Mary Drownoski, promoted to assoc. professor and granted tenure

Sydney Everhart, promoted to assoc. professor and granted tenure

Yufeng Ge, promoted to assoc. professor and granted tenure

Chandra Giles, promoted to assoc. extension educator

Leonardo Gonzalez, promoted to extension educator

Christopher Gustafson, promoted to assoc. professor and granted tenure

Kathryn Hanford, promoted to professor of practice

Lindsay Hastings, promoted to assoc. professor and granted tenure

Joanna Hergenreder, promoted to associate professor

Jim Jansen, promoted to assoc. extension educator

Jennifer Keshwani, promoted to assoc. professor and granted tenure

Joe Lous, promoted to assoc. professor and granted tenure

James MacDonald, promoted to professor

L.J. McElravy, promoted to assoc. professor and granted tenure

Nathan Mueller, Promoted to assoc. extension educator

Ashley Mueller, promoted to assoc. extension educator

Francisco Munoz-Arriola, promoted to assoc. professor and granted tenure

Wayne Ohnesorg, promoted to extension educator

Santosh Pitla, promoted to assoc. professor and granted tenure

Erin Sayer, promoted to assoc. professor of practice

Marilyn Schlake, promoted to associate extension educator

James Schnable, promoted to assoc. professor and granted tenure

Natalie Sehi, promoted to extension educator

Greg Somerville, promoted to professor

Tsegay Tadesse, promoted to research professor

John Thomas, promoted to extension educator

Cory Walters, promoted to assoc. professor and granted tenure

National faculty recognition and awards Received in 2019

Tami Brown-Brandl, Fellow, American Society of Agricultural and Biological Engineers

Cody Creech, Early Career Award, Crop Science Society of America

Joe Louis, CAREER Award, National Science Foundation; Early Career Award, Entomological Society of America

Angela Pannier, Presidential Early Career Award for Scientists and Engineers, National Science Foundation

Rebecca Roston, CAREER Award, National Science Foundation

James Schnable, Early Career Award, American Society of Plant Biologists

Charles Shapiro, Fellow, Soil Science Society of America

Rebecca Wachs, CAREER Award, National Science Foundation

Welcome New Faculty Since January All Hands Meeting



Heather
Akin



James
Allen



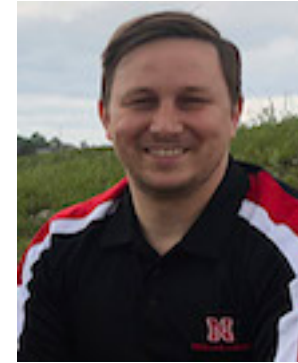
Lord
Ameyaw



John
Beghin



Halden
Clark



Elliott
Dennis



Tara
Dunker



Amanda
Easterly



Michael
French



Michelle
Garwood



Souparno
Ghosh



Yawen
Guan



Ming
Guo



Megan
Hanefeldt



James
Headrick



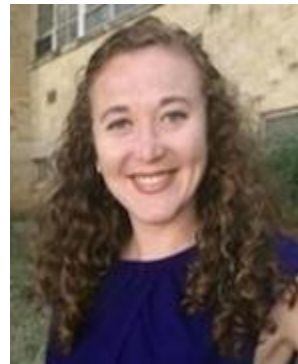
Theodore
Hibbeler



Javed
Iqbal



Shawn
Kaskie



Kylie
Kinley



Kyle
Koch



Jordan
Luxa



Mitiku
Mamo



Kathleen
Marshall



Kate
McCain

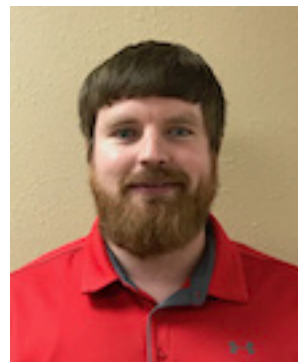
Welcome New Faculty Since January All Hands Meeting



Mesfin Mergia
Mekonnen



Tonya
Meyer



Jeremy
Milander



Melissa
Mracek



Charlotte
Narjes



Laura
Narjes



Sydney
O'Daniel



Sorab
Panday



Laila
Puntel



Nathan
Rice



Taylor
Ruth



Tiffany
Sessions



Hyun Seob
Song



Brittany
Spieker



Lauren
Stohlmann



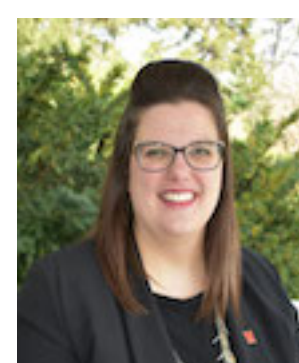
Dongchu
Sun



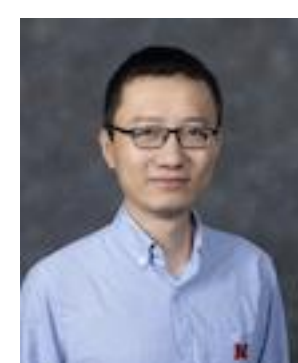
Yalem
Teshome



Amy
Walton



Laura
Young



Ruizhi
Shang



Ron
Zluticky

New Leaders Since January All Hands Meeting



Craig Allen
Director
Center for Resilience in
Working Agricultural Landscapes



Matt Andrews
Director
Nebraska EPSCoR



Mark Balschweid
Interim Director
Rural Futures Institute



Bruce Brodersen
Director
Veterinary Diagnostic Center



Kelly Bruns
Interim Dean
Nebraska College of Technical
Agriculture in Curtis



Nicole (Smith) Frerichs
Assistant Dean for Student Success
College of Agricultural Sciences
and Natural Resources



Stan Garbacz
Interim Director
IANR Office of
Global Engagement



Sherri Jones
Dean
College of Education
and Human Sciences



Jerry Volesky
Interim Assoc. Director
West Central Research
and Extension Center



IANR Facilities



**Christenson Research
and Education Building
at ENREC**



**Dairy
Store**



Nebraska East Union



TENTATIVE completion dates

Dining Center

Nov. 4, 2019

Starbucks

Feb. 1, 2020

Great Plains Room

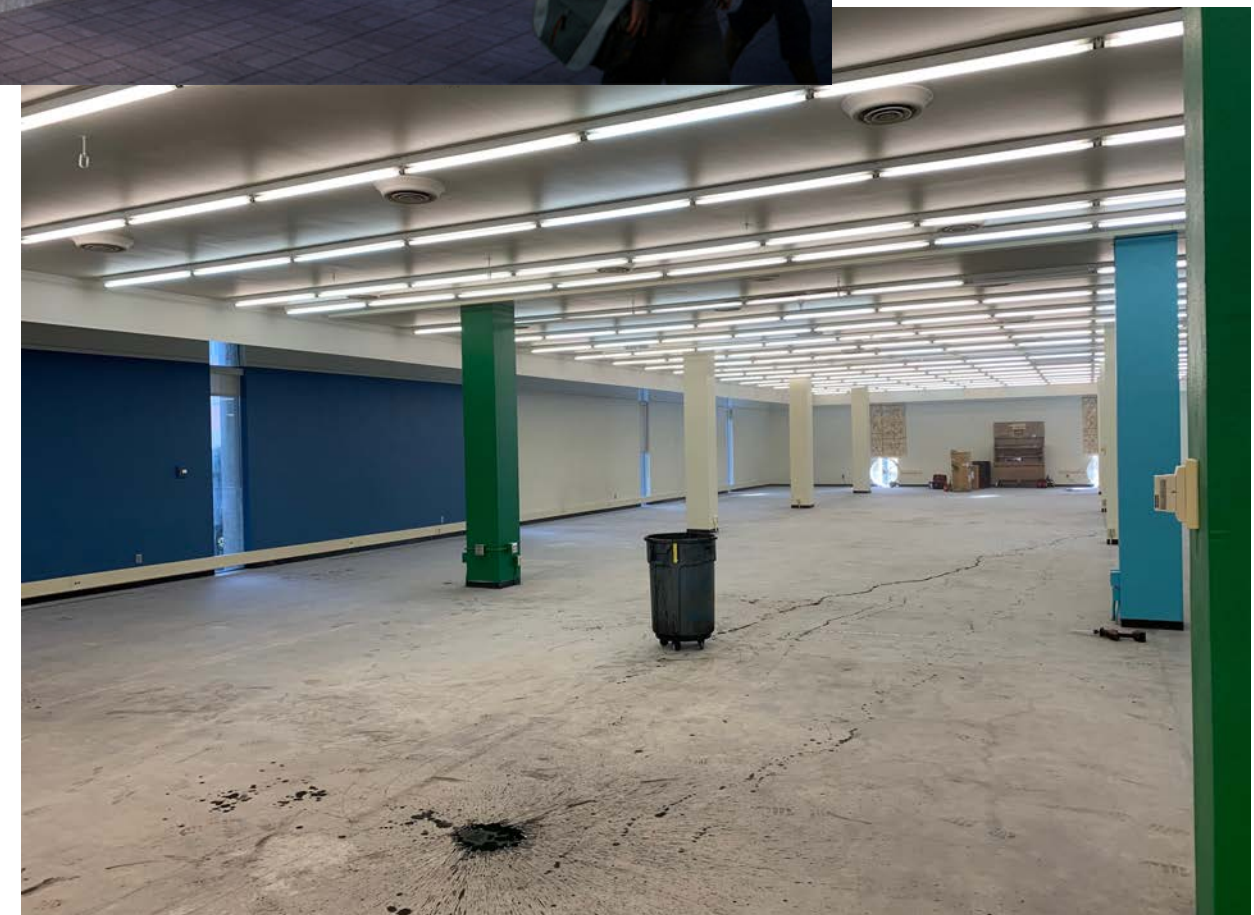
Mar. 29, 2020

1st Floor/Bowling Alley

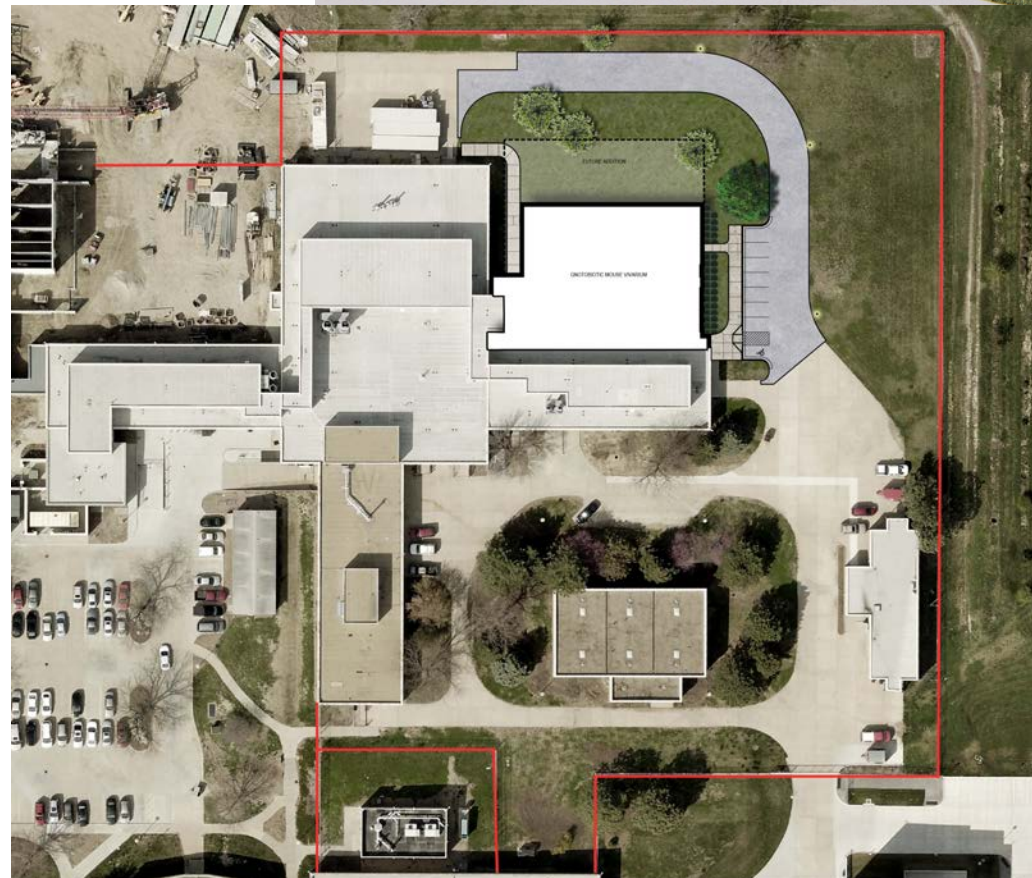
Sept. 2020



C.Y. Thompson Library



Gnotobiotic Mouse Vivarium





Charley Hedstrom
Director of Opportunity



Nebraska Innovation Campus





***IANR = Momentum,
Innovation, Relevance***

IANR




CASNR's 2019-20 enrollment features more Nebraskans

An increasing number of Nebraskans can be found in the 2019-20 freshman class in the College of Agricultural Sciences and Natural Resources at the University of Nebraska–Lincoln.

Omaha World-Herald

Enrollment slips at 3 of 4 of the main schools in University of Nebraska system

By Rick Ruggles / World-Herald staff writer Sep 10, 2019  2

The Gazette

Thu., September 12, 2019

Enrollment drops at Iowa's public universities

INSIDE
HIGHER ED

May 30, 2019

College Enrollment Declines Continue


The Washington Post

SEPTEMBER 23, 2019

US universities see decline in students from China



The land-grant mission is not a new concept, but it takes bold action to truly deliver upon it in today's society.



Nebraska
Integrated Beef
Systems Initiative
(NIBSI)

- In the process of filing 4 positions – with two additional positions in the queue
- Expert in residence program
- Genotype x Environment x Management x Society (GEMS) – research focused on the complex interactions between the genotype, environment management and society



Center for Resilience in Working Agricultural Landscapes

- Working with stakeholders to define key issues and provide a focus
- Using models, if necessary to help identify limits to acceptable change or thresholds
- Examining the roles of decision-making, customs, rules or regulations for insights and options for building resilience and adapting to changing circumstances

An aerial photograph of a town at sunset, with the sun low on the horizon, casting a warm glow over the buildings and streets. The town is nestled in a valley, with rolling hills in the background. The sky is a mix of orange, yellow, and blue.

Rural Community Prosperity Working Group

Working group team members

Mark Balschweid

ALEC, Rural Futures Institute

Theresa Klein

Rural Futures Institute

Don Macke

Community Vitality Initiative

Amy Struthers

College of Journalism and Mass Communications

Larry VanTassell

Agricultural Economics

Milan Wall

Heartland Center for Leadership Development

Kim Wilson

Community Vitality Initiative

Key dates

October 15

Listening Session, North Platte

October 24

Listening Session, Lincoln

November 15

Strategic framework due

If you're always
trying to be **normal**
you will **never know**
how **amazing** you can be.

- *Maya Angelou*

