

IANR All Hands



September 20, 2018

IN OUR GRIT, OUR GLORY™



People are IANR's greatest asset



Promotion & Tenure

36 faculty awarded promotion and/or tenure in 2018 – Congratulations!

Promoted to Full Professor and Granted Tenure

Nicholas Brozovic, Ag Economics
Paul Kononoff, Animal Science
Angela Pannier, Biological Systems Engineering
Matthew Spangler, Animal Science

Joel Cramer, Nutrition and Health Sciences
Ayse Kilic, Natural Resources
Steven Thomas, Natural Resources
Brian Wardlow, Natural Resources

Granted Tenure

Haishun Yang, Agronomy and Horticulture

Promoted to Associate Professor and Granted Tenure

Soonkyu Chung, Nutrition and Health Sciences
Trenton Franz, Natural Resources
Douglas Golick, Entomology
Patricio Grassini, Agronomy and Horticulture
Derek Heeren, Biological Systems Engineering
Tomas Helikar, Biochemistry
Amitkumar Jhala, Agronomy and Horticulture

Fabio Mattos, Ag Economics
Amanda Ramer-Tait, Food Science and Technology
Ty Schmidt, Animal Science
Amy Schmidt, Biological Systems Engineering
Gary Sullivan, Animal Science
Dirac Twidwell, Agronomy and Horticulture
John Loy, Veterinary Medicine

Promoted to Full Research Professor

Cody Knutson, Natural Resources
Daniel Snow, Natural Resources

Promoted to Extension Educator

Karna Dam, ENREC - Metro
Lisa Poppe, ENREC - Metro
Tracy Pracheil, 4-H Youth Development
Robert Tigner, West Central Research and Extension Center

Promoted to Associate Extension Educator

Jennifer Epp, ENREC – Northeast
Jean Ann Fischer, Nutrition and Health Sciences
Jill Goedeken, ENREC – Northeast
Alyssa Havolvic, ENREC – Metro

Katie Pleskac, ENREC - Southeast
Laura Thompson, ENREC - Southeast
Tyler Williams, ENREC - Metro



**Justin
Arnold**



**Jennifer
Auchtung**



**Thomas
Auchtung**



**Geng
Bai**



**Katherine
Caswell**



**Deniz
Ciftci**



**Kathleen
Cue**



**Matteo
D'Alessio**



**Heidi
Diefes-Dux**



**Kerry
Elsen**



**Michael
Eskelson**



**Helen
Fagan**



**Katarzyna
Glowacka**



**Bradley
Goetsch**



**Hannah
Guenther**



**Steven
Jara**



**Jooyeoun
Jung**



**Gang
Li**



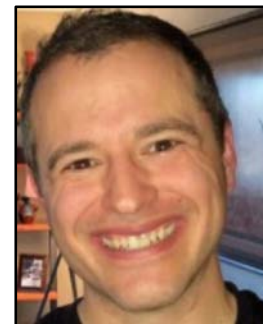
**Marc
Libault**



**Andrew
Little**



**Kurt
Mantonya**



**Benjamin
Mcshane-Jewell**



**Elena
Merrick**



**Aaron
Mittelstet**



**Beth
Nacke**



**Amy
Napoli**



**Tammie
Ostdiek**



**GengXin
Ou**



**Yi
Qi**



**Sarah
Sillman**



**Michael
Sindelar**



**Megan
Taylor**



**Curtis
Tomasevicz**



**Rossana
Villa Rojas**



**Rebecca
Young**

Welcome new faculty Since Jan. 2018 All Hands

Academic Unit Leader Transitions



Richard Ferguson
Agronomy
and Horticulture



David Jones
Biological
Systems Engineering



Richard Bischoff
Child, Youth
and Family Studies

**Thank you for your
leadership!**



Gary Brewer
Entomology



Linda Boeckner
Nutrition and
Health Sciences



James Steadman
Plant Pathology

Academic Unit Leader Transitions



Martha Mamo
Agronomy
and Horticulture



David Jones
Biological
Systems Engineering



Julia Torquati
(Interim)
Child, Youth
and Family Studies

Welcome new leaders!



John Ruberson
Entomology



Mary Ann Johnson
Nutrition and
Health Sciences



Loren Giesler
Plant Pathology

Additional Leadership Transitions

Since Jan. 2018
All Hands

Clayton Yeutter Institute of
International Trade and Finance



Jill O'Donnell
Director

Eastern Nebraska
Research and Extension Center



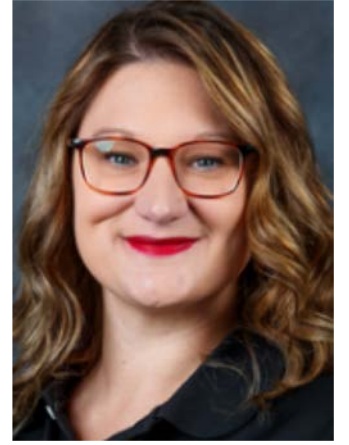
Doug Zalesky
Director

Food Processing Center



Terry Howell Jr.
Executive Director

Housing, Massengale
Residential Center



Amanda Orr
Residence Director

High Plains
Regional Climate Center



Rezaul Mahmood
Director

Nebraska Manufacturing
Extension Partnership



Matt Allmand
Director

Rural Futures Institute



Connie Reimers-Hild
Interim Executive Director

Veterinary
Diagnostic Center



Clayton Kelling
Interim Director

5-year Review Completed

Dean Hibberd reappointed



Chuck Hibberd

Dean and Director, Nebraska Extension



**IANR'S collaborative communities ensure
Nebraska's competitiveness in a world of
change and challenge.**

IANR

Agriculture in Nebraska

47K

farms and
ranches

91%

of state's total
land area

4,584

foot elevation
change from
east to west

24K

miles of
rivers and
streams

#1

In the nation for
beef and veal
exports, bringing
in \$1.26B in
2017.



One in four jobs in
Nebraska is related
to agriculture.

\$6B

In annual
agricultural
exports.



Nebraska ranks
#2 nationally in
ethanol
production
capacity.

\$21.5B

In cash receipts
from farm
marketing to the
state's economy.

SUSTAINABLE DEVELOPMENT GOALS



#1 No Poverty



#2 Zero Hunger



#3 Good Health & Well-Being



#4 Quality Education



#5 Gender Equality



#6 Clean Water & Sanitation



#7 Affordable & Clean Energy



#8 Decent Work & Economic Growth



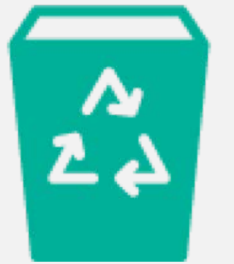
#9 Industry, Innovation & Infrastructure



#10 Reduced Inequalities



#11 Sustainable Cities & Communities



#12 Responsible Production & Consumption



#13 Climate Action



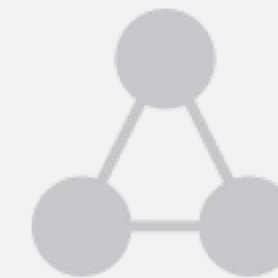
#14 Life Below Water



#15 Life On Land



#16 Peace, Justice and Strong Institutions



#17 Partnerships for the Goals



ZERO HUNGER: WHY IT MATTERS

What's the goal here?

To end hunger, achieve food security and improved nutrition and promote sustainable agriculture

Why?

Extreme hunger and malnutrition remains a barrier to sustainable development and creates a trap

from which people cannot easily escape. Hunger and malnutrition mean less productive individuals, who are more prone to disease and thus often unable to earn more and improve their livelihoods. There are nearly 800 million people who suffer from hunger worldwide, the vast majority in developing countries.

2 ZERO HUNGER



A profound change of the global food and agriculture system is needed to nourish today's 795 million hungry + the additional 2 billion increase in global population expected by 2050

How many people go hungry?

New evidence continues to signal that the number of hungry people in the world is growing, reaching 821 million in 2017 or one in every nine people.

Hunger has been on the rise over the past three years, returning to levels from a decade ago. This reversal in progress sends a clear warning that more must be done and urgently if the Sustainable Development Goal of Zero Hunger is to be achieved by 2030.

The situation is worsening in South America and most regions of Africa. With enough food to feed everyone on the planet, why are there so many hungry people?

Poor harvesting practices, as well as food wastage have contributed to food scarcity. Wars have also had a negative impact on the availability of food and have led to a destruction of the environment, which is critical to grow food.

Why should I care?

We all want our families to have enough food to eat that is safe and nutritious. A world with zero hunger can positively impact our economies, health, education, equality and social development. It's a key piece of building a better future for everyone. Additionally, with hunger limiting human development, we will not be able to achieve the other sustainable development goals such as education, health and gender equality.

How much will it cost to achieve zero hunger?

We will need an estimated additional \$267 billion per year on average to end world hunger by 2030. There will need to be investments in rural and urban areas and in social protection, so poor people have access to food and can improve their livelihoods.

What can we do to help?

You can make changes in your own life—at home, at work and in the community—by supporting local farmers or markets and making sustainable food choices, supporting good nutrition for all, and fighting food waste.

You can also use your power as a consumer and voter, demanding businesses and governments make the choices and changes that will make Zero Hunger a reality. Join the conversation, whether on social media platforms or in your local communities.

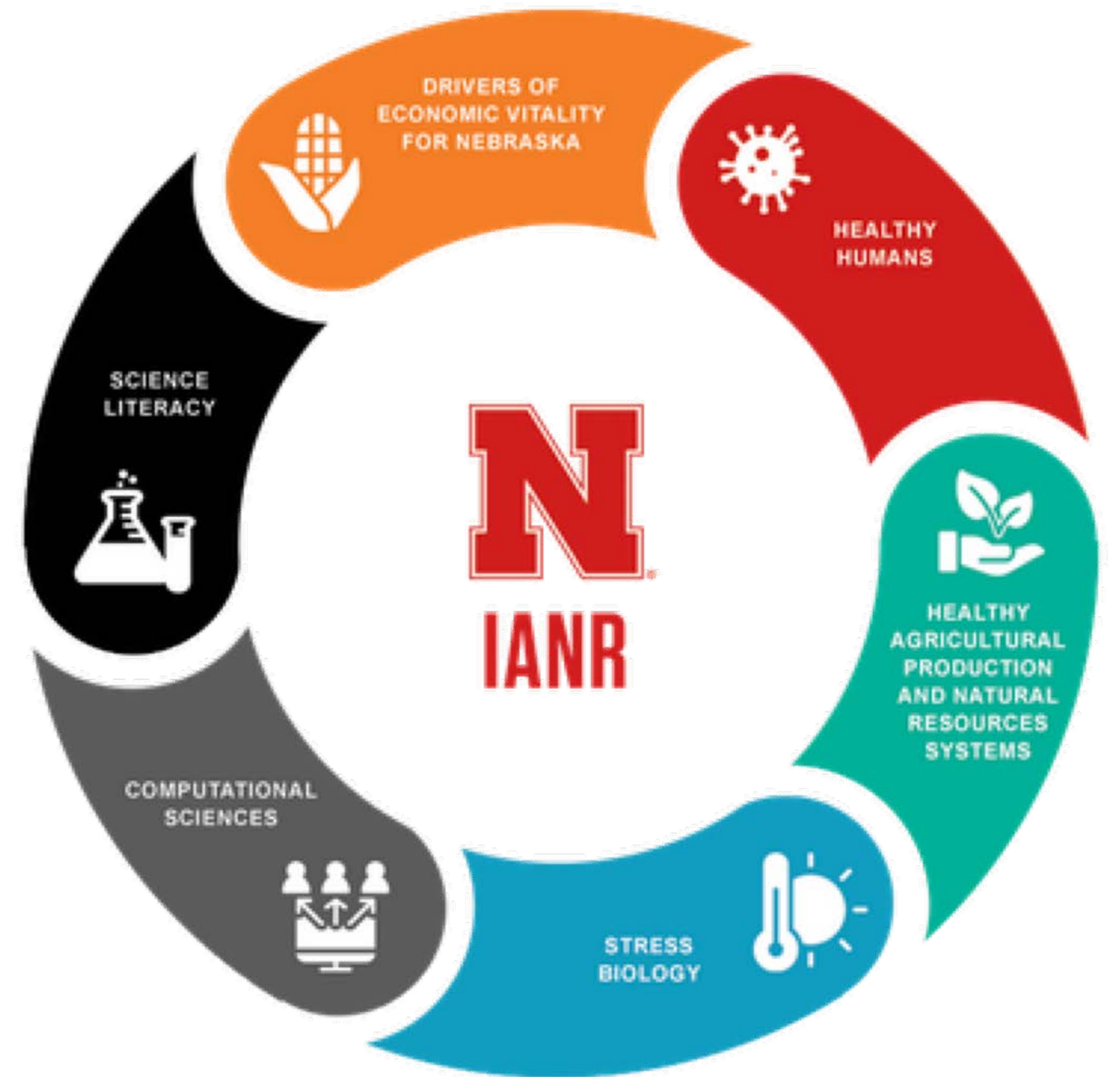
You can join the Global Movement for Zero Hunger by joining the Zero Hunger Challenge (www.zerohunger-challenge.org) to learn more, including more ways to take action!

To find out more about Goal #2 and other Sustainable Development Goals, visit:

<http://www.un.org/sustainabledevelopment>

Join Our Team

- Strategic hires in six community areas – 24 faculty
- CASNR – dean
- CEHS – dean
- Veterinary Diagnostic Center – director
- IANR Communications – director



Clayton Yeutter Institute of International Trade and Finance

March 13: Hosted CME Group
Symposium

July 1: Jill O'Donnell named director

Sept. 7: Hosted Ikuo Kabashima,
governor of Japan's Kumamoto
Prefecture



IANR Research Highlights



**Discovery of two new fatty acids –
Nebraskanic and Wuhanic acids**



**Improving fuel efficiency by developing
new tractor testing techniques**



**Student-led research converting roadside
plantings into pollinator-friendly
wildflower patches**

Gaming: Agpocalypse 2050 and Preservation

Targeted for middle and high school students

Designed to hone integrated systems thinking skills and to enhance science literacy

Focused on the food-energy-water-society nexus

\$1M grant from the National Science Foundation



<https://www.thegamecrafter.com/> - \$31.99

Congratulations Nebraska 4-H

Nebraska 4-H claimed second place in the national 4-H Raise Your Hand campaign

Over 14,000 hands raised by 4-H alumni and friends

Awarded \$10,000 to help provide hands-on learning experiences to youth across the state



Checking Our Blind Spots

Diversity and Inclusion

2 days ago

Blind Spots event draws more than 400

by Troy Fedderson | University Communication



Nebraska Union Plaza

Sept. 17, 2018

UNIVERSITY OF NEBRASKA-LINCOLN

N NEBRASKA TODAY

An opportunity to explore diversity and inclusion issues while learning about personal biases was an eye-opening experience for Nebraska's Stephen Cass.

The senior history and classics major was among the more than 400 Huskers who took part in the Check Your Blind Spots Mobile Tour – Diversity and Inclusion Fair, held Sept. 17 on the Nebraska Union Plaza. The event featured a multi-media trailer designed to teach individuals about unconscious bias.

"This was a tremendous opportunity to learn about issues and strategies related to inclusiveness," Cass said. "It's really great exposure about what we can do individually in terms of diversity and inclusion within our campus community."

The Blind Spots video presentation challenged participants to recognize that – based on the amount of information processed instantaneously – human brains often use cognitive short cuts that result in assumptions being made about others.

"Basically, we need to realize that our brains are making these assumptions for us," Cass said. "We need to remember to slow down, think about our actions, seek a different perspective and see people for who they really are rather than who we assume they are."



**Dean's
Sprint**





Tiffany Heng-Moss
Interim Dean
College of Agricultural
Sciences and Natural
Resources



Ron Rosati
Dean
Nebraska College of
Technical Agriculture
in Curtis



Beth Doll
Interim Dean
College of Education
and Human Sciences



Chuck Hibberd
Dean
Nebraska Extension



Tala Awada
Associate Dean
Agricultural Research
Division

#ThisIsCASNR

Largest Enrollment – History of College

- Largest incoming class of first-time freshmen and transfer students = 2,422
- CASNR welcomed 101 international undergraduate students
- Over 90% of Spring 2018 eligible undergraduate students enrolled for the fall semester
- Enrollment also increased for graduate and professional students (777 students)

Co-Creators of Their Learning

- New model in course creation, student innovation, teamwork, and investigative learning
- Student Fellows partner with Faculty Mentors to design a 4-year CASNR Experience model that is holistic, innovative, and transformative

Holistic Student Development

Linking: curricular, co-curricular, and experiential learning to prepare students for careers addressing global challenges



Commitment to Inclusive Excellence

An engaged community that creates a welcoming learning environment that leverages the diversity of our students, staff, and faculty to enhance the learning experience for all.



Nebraska and Beyond

Global Community of Learners
Pathways to Extend Learning Beyond Nebraska



Student Success

Retention:
85% CASNR Average
72% National Average

Matriculation:
75% CASNR
68% UNL
59% National Average

Placement:
Over 90% CASNR
Ensuring Your Future



Leveraging Partnerships

To provide students with an authentic educational experience

Public, Private, Global
K-12 Schools, Two- and Four-Year
Institutions, and Institutional

Co-Creators of the Future

Change Agents, Determined Doers,
Solution Creators,
Fearless Entrepreneurs, and
Knowledge Seekers



Power of Every Person

- NHRI: Only strengths-based leadership mentoring program in the country
- 180 UNL Students + 180 LPS Students = 360 Students and 180 Investment Relationships
- ALEC 102 = 14,000 hrs. of service learning



Nebraska Human Resource Institute (NHRI):
Developing the future generation of leaders.



Global Connections

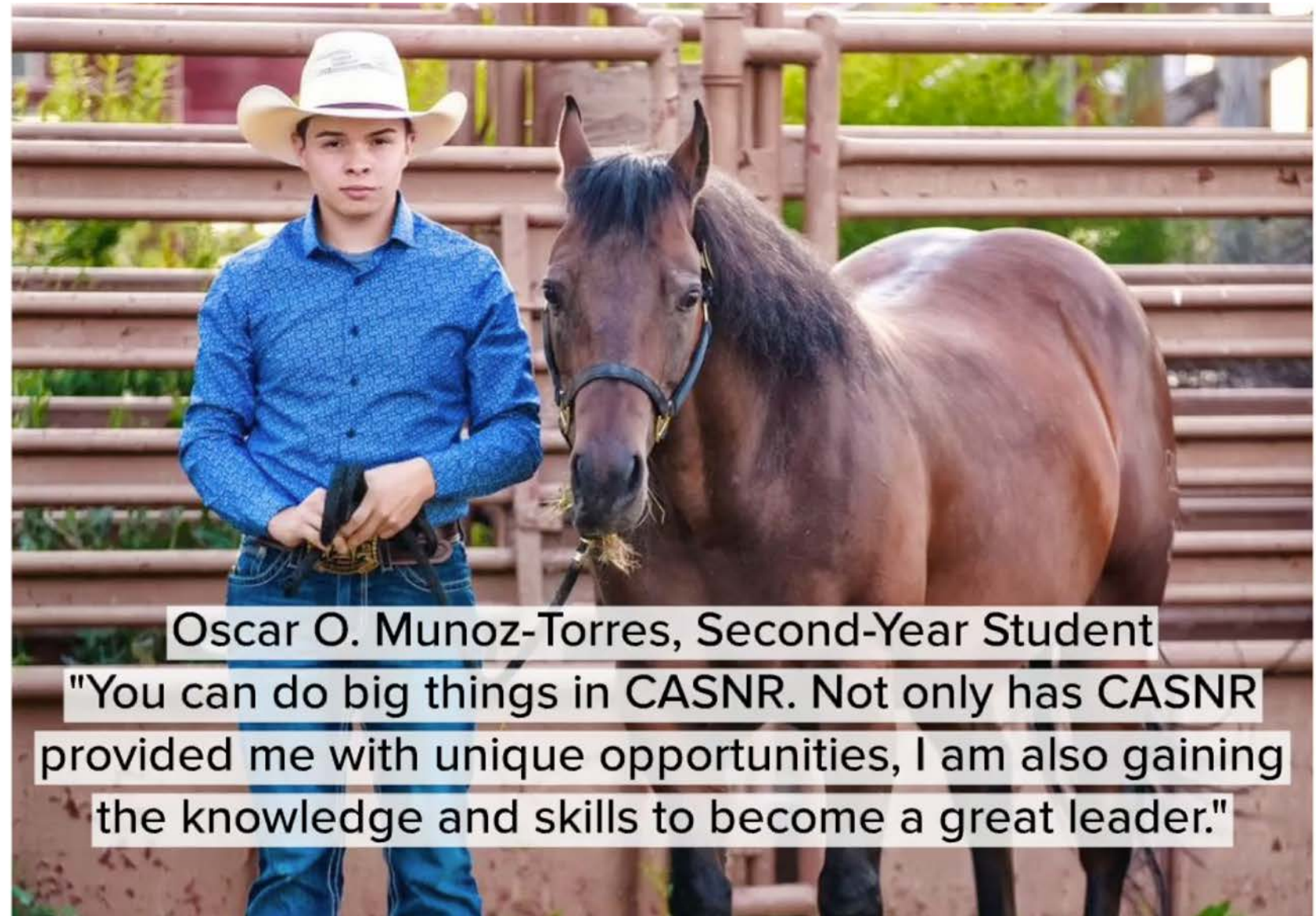


- Community of learners
- Connecting our students to the world through diverse education pathways
- Network of over 20,000 living alumni

Our Time, Our Future

Now in its 146th year, the College is in an amazing position to continue transforming the lives of students here and around the world.

THANK YOU!



Oscar O. Munoz-Torres, Second-Year Student

"You can do big things in CASNR. Not only has CASNR provided me with unique opportunities, I am also gaining the knowledge and skills to become a great leader."

#ThisIsCASNR

Nebraska College of Technical Agriculture

a brief overview

1. NU 2 yr college - agriculture & veterinary technology
2. Statewide mission, campus in SW Nebraska
3. Focus on workforce development, experiential learning
4. Open access - \$131.50/SCH tuition for all students
5. Extensive on-campus experiential learning infrastructure



Nebraska College of Technical Agriculture some 2017/2018 assessment results

1. 275 fulltime students – 23 year record high (63% ♀)
2. Top 25 US Trade Schools – Forbes Magazine
3. Graduate salary (2 yr colleges) - #1 Nebraska, #11 US
4. Graduate employment rate (2 yr colleges) - #1 Nebraska, #7 US



Nebraska College of Technical Agriculture working to grow IANR partnership and collaboration

1. Transfer pipeline built – *Link to Lincoln*
 - Transfer growth from 6% to ~20% since 2013
2. Nine CASNR A to B agreements in place
3. Faculty partnerships: urban ag joint faculty, Curtis POP
4. NCTA curriculum adjustments
5. Additional opportunities:
 - a. Expand agricultural skills development partnerships
 - b. Provide UNL grad student teaching opportunities
 - c. Collaborative programming, i.e. life skills modules



CEHS prepares professionals

special_education_teachers
elementary_teachers
counseling_psychologists
school_psychologists textile_merchandisers
family_support_specialists principals
community_wellness_managers
textile_managers athletic_trainers
early_childhood_specialists
superintendents marriage_and_family_therapists
hotel_managers event_managers
corporate_wellness_managers
speech_language_pathologists textile_buyers
nutrition_educators
early_childhood_teachers
secondary_teachers



Strategic Priorities

Engage Nebraska: enhancing, increasing and making public its partnerships with Nebraska communities.

Data Informed Teaching, effectively using data to evaluate, refine, and strengthen our teaching

Affirm diversity, making CEHS a welcoming and inclusive place to teach, learn and work.

Increase visibility, through cutting edge marketing and communication.

Practice-based research, that is well-designed, timely, and highly relevant to practice.

International engagement to solve local and global challenges



CEHS by the numbers

Over
50,000

CEHS alumni
around the world



More than
500

scholarships awarded
through CEHS last year



1,157

1 in 4 graduate students
at Nebraska are in CEHS



CEHS alumni
live and work in

88

different countries
around the world



80%

of CEHS students are
residents of Nebraska



19%

of Husker athletes
are enrolled in CEHS majors

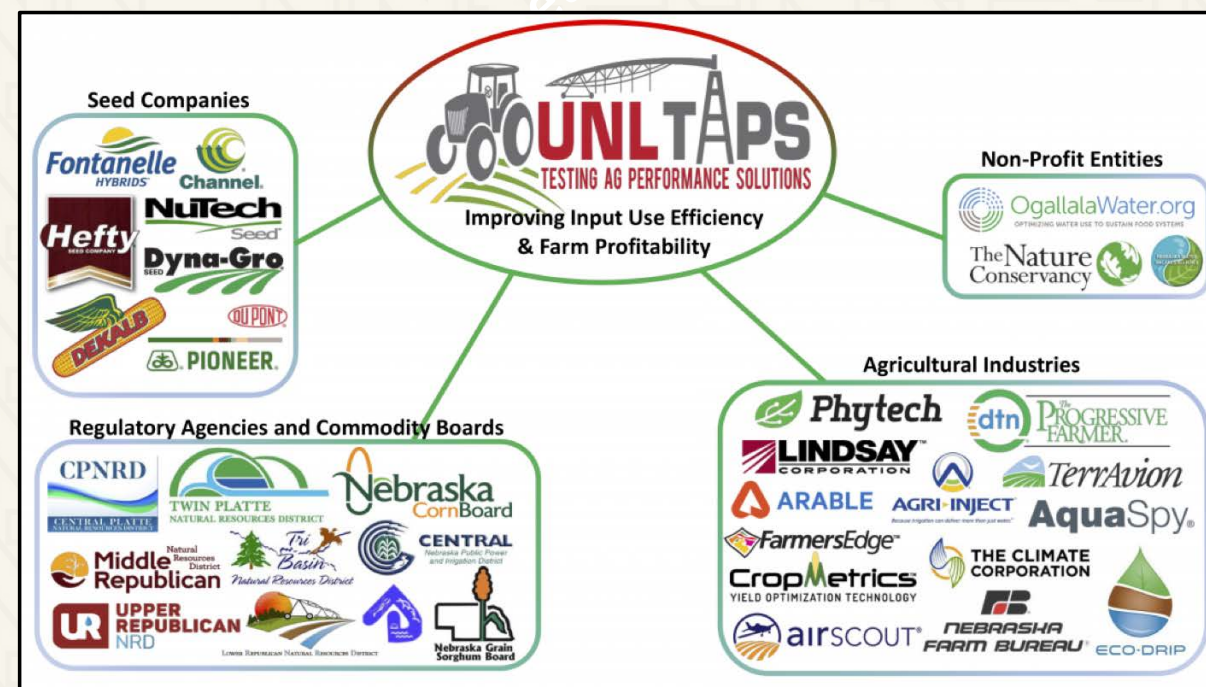
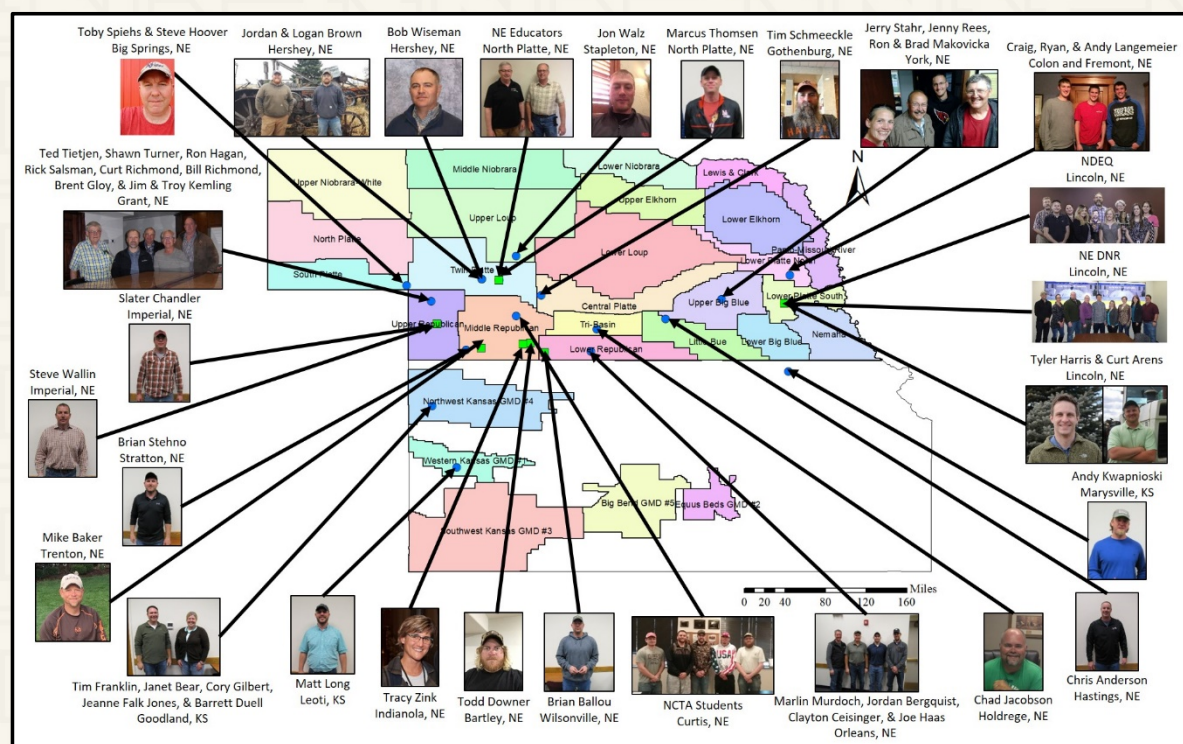
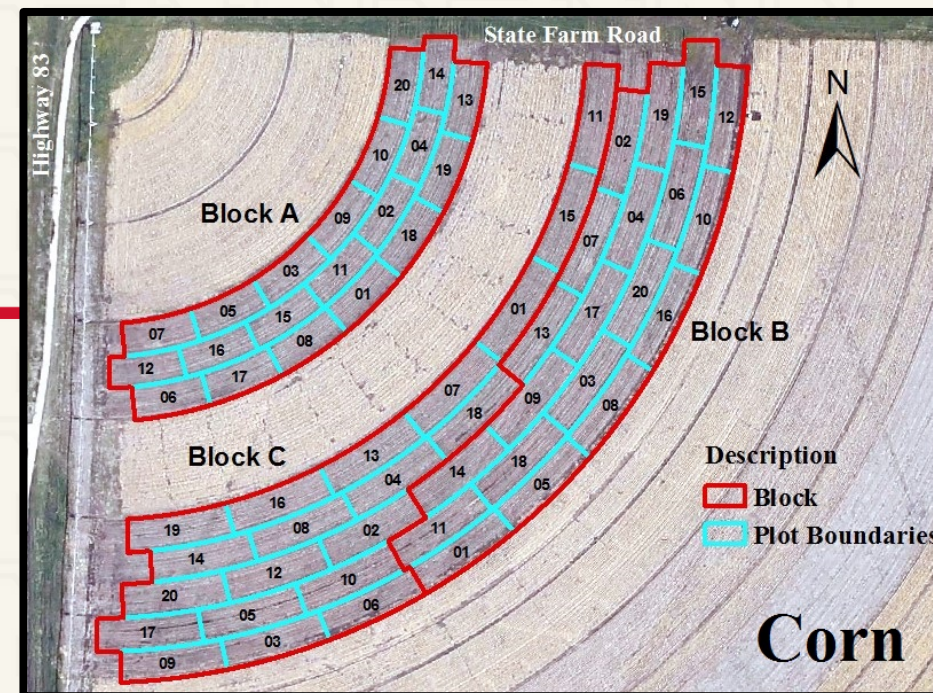




Daran Rudnick, Chuck Burr, and Matt Stockton
West Central Research and Extension Center

Farm Management Competitions

- Engages producers, industry, regulatory agencies, and others around farm profitability and resource use efficiency.
- Connects research with extension through participatory learning.
- More than 80 participants and 35 Partners/Sponsors



Nebraska Entrepreneurship Initiative

Nebraska SourceLink

eCommunities

- Infrastructure
- University Demo
- Statewide System Vision
- NBDC with Extension
- Access to Resources
- Resource Transparency

- Rural Focused
- Entrepreneur Focused Development
- Based on NetWork Kansas
- Extension/CVI Lead
- Stronger Area Economies
- Economic Diversification

Regional Food Systems Initiative

- Why?
 - Locally-sourced foods
 - Livelihood
 - Values-driven
 - Economy

- Team:

Andreia Bianchini-Huebner
Sarah Browning
Dennis Burson
Byron Chaves
Elaine Cranford
Vaughn Hammond
Ben Jewell
Gary Lesoing
Rex Nelson

John Porter
Sheila Purdum
Rick Rasby
Randy Saner
Nicole Stoner
Jayne Stratton
Vanessa Wielenga
Sam Wortman

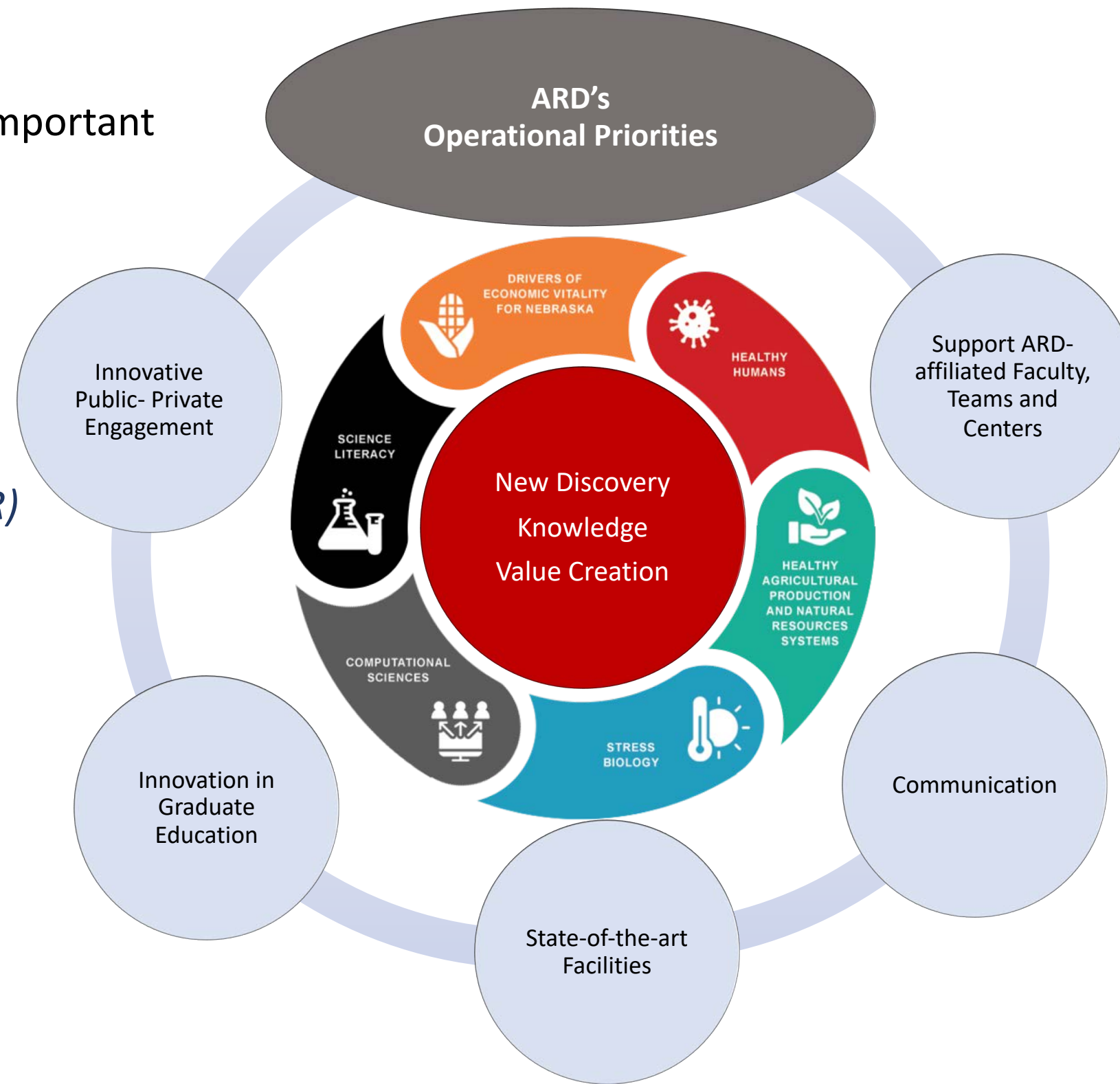


Agricultural Research Division

“Supporting the Science to Ensure Resilient Food Systems and a Healthy Future”

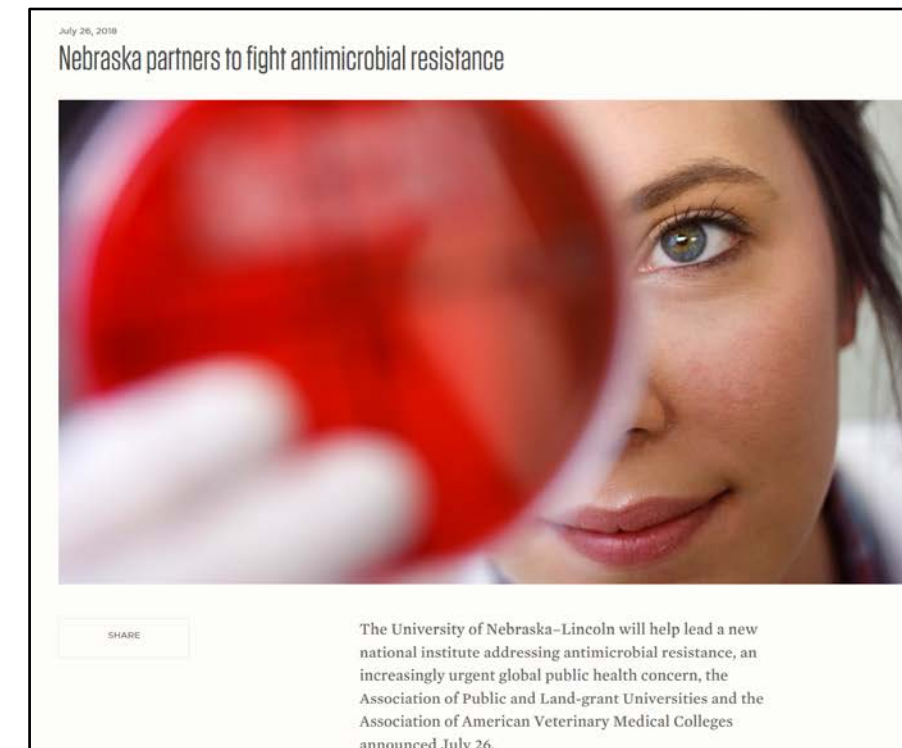
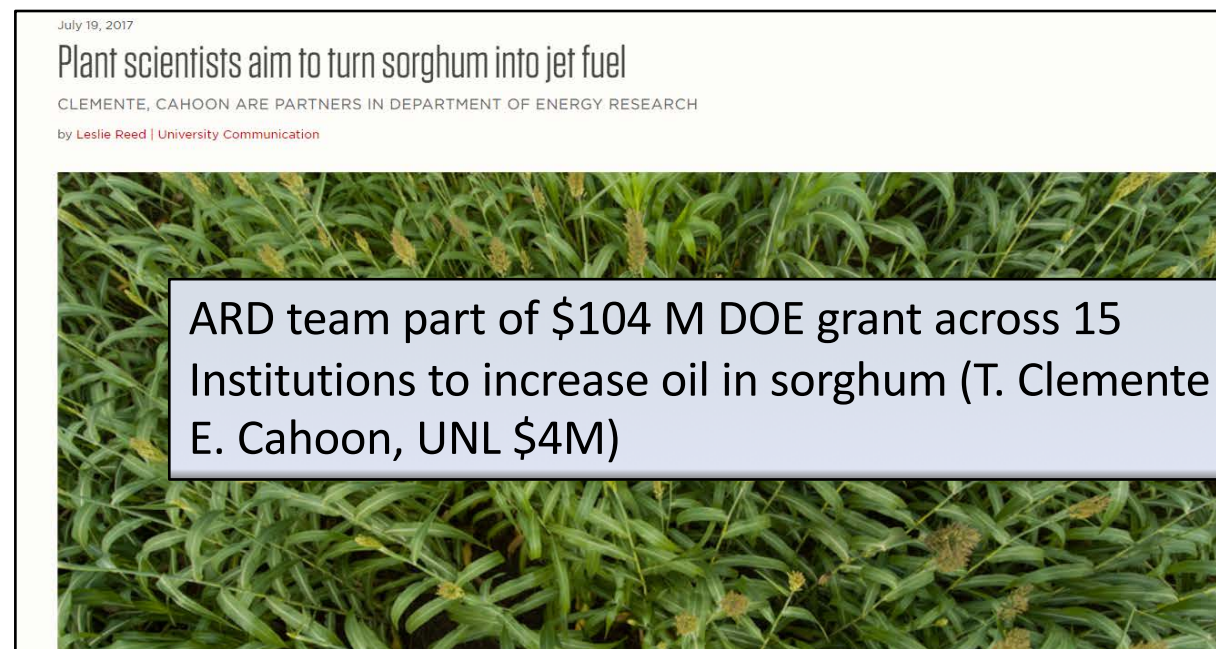
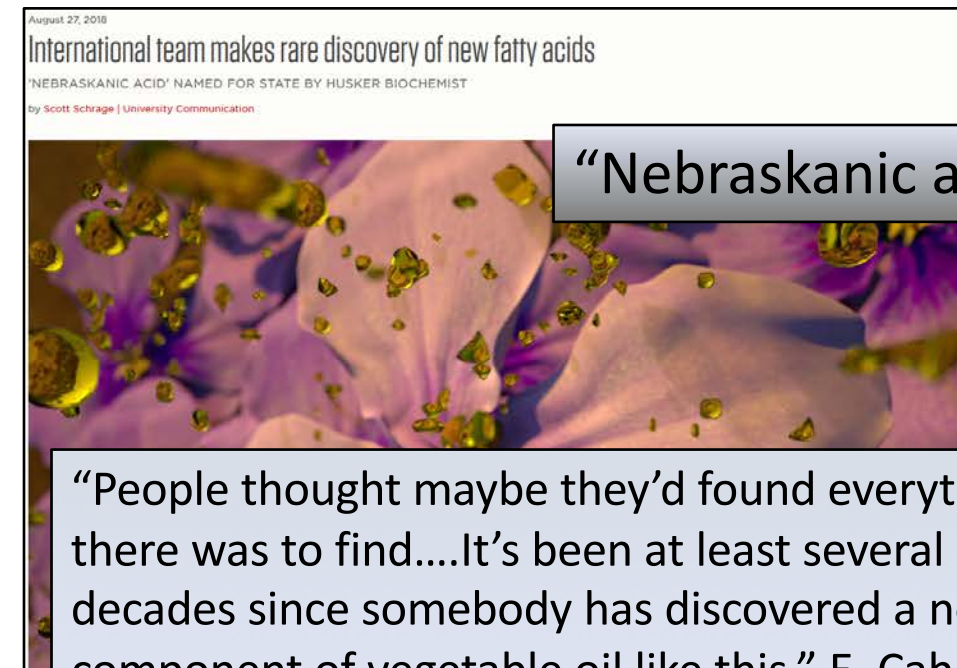
Building Strategic framework for important current and emerging issues:

- *Translational Plant Sciences*
- *Beef Systems Initiative*
- *National Institute for Antimicrobial Resistance (AMR) Research and Education*
- *Nebraska Food For Health Center*
- *FFAR Graduate Fellowship Program*



Improving the Daily Lives of People in NE and Beyond through High Impact Research

- Ranked 37th in the world for Agriculture and Forestry, 2018 QS World University Rankings
- > 340 ARD Faculty across 15 Academic Units, 3 District Research and Extension Centers, and 19 Academic Centers
- \$54.5 M in Sponsored Research (20% increase since 2014)
- 719 Graduate Students (379 MSc, 327 PhD, Professional Degree 13)





**IANR brings together world-class people,
research and facilities to benefit Nebraska and
the beyond.**

IANR

Facility Updates



Panhandle Research & Extension Center
Grad student and visiting scholar housing completed.



ENREC Christenson Building
Addition construction underway.



IANR Global Engagement
Moves to new home on 2nd floor of Ag Hall.

Basketball, tennis and sand volleyball courts



Ruth Staples Child Development Laboratory & Family Resource Center



East Campus Union renovation



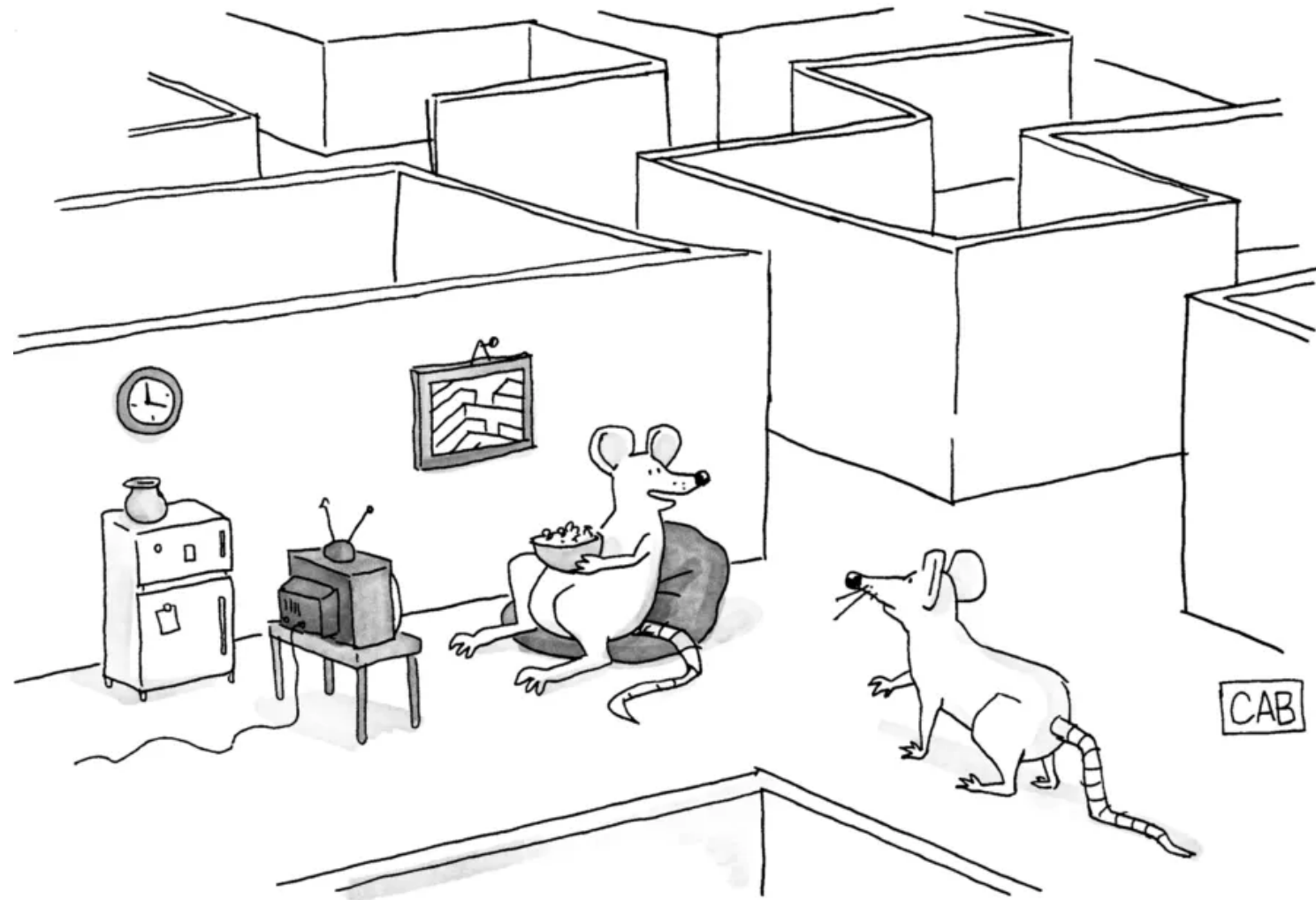
C.Y. Thompson transformation



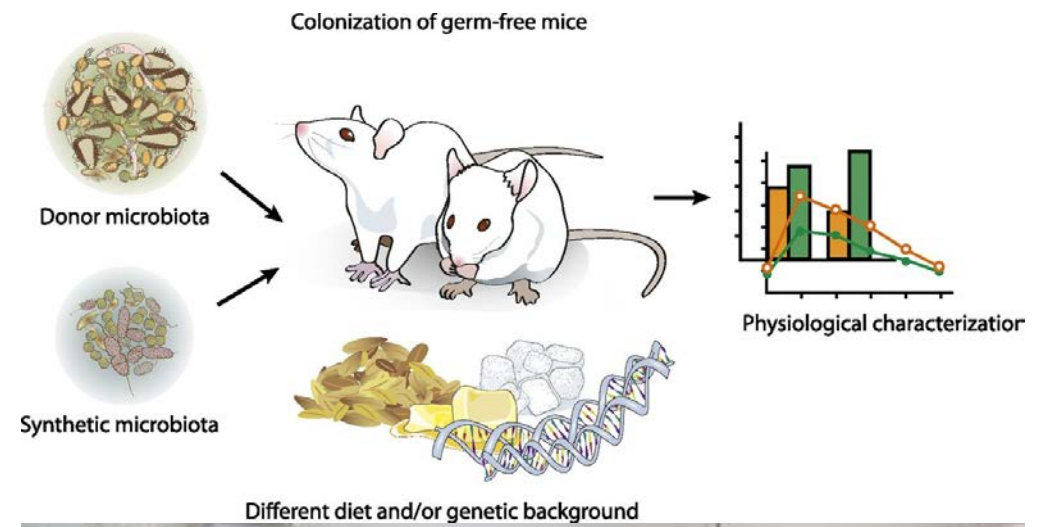
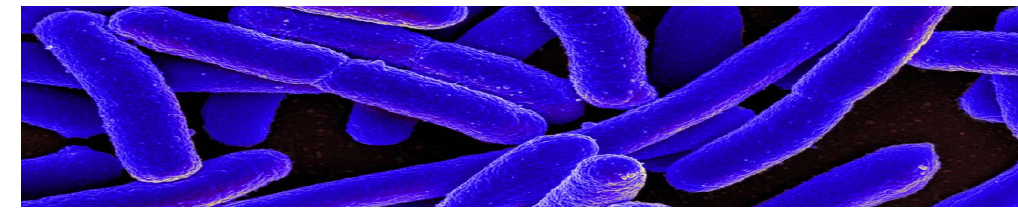
NFHC - New germ-free mouse facility



NEBRASKA
FOOD FOR HEALTH
CENTER *at the University of Nebraska*



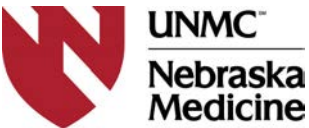
“You wanna know the way out? Acceptance.”





Through public/private partnerships IANR is finding solutions, sharing those solutions with others and developing the next generation ready to join the STEM workforce.

Public/Private Partnerships



National Institute for Antimicrobial
Resistance Research and Education



IANR refuses to let budget challenges stop our momentum in supporting Nebraska's farmers, ranchers, students, teachers, youth and families.

**Update on IANR Budget
January 2017 – June 2018**

Cash Returned
\$4.3M

Permanent Reduction
\$2.5M

Omaha World-Herald

REAL. FAIR. ACCURATE.

Nebraska beat expectations, collected \$4.567 billion in taxes last fiscal year

By Martha Stoddard / World-Herald Bureau Jul 14, 2018 0

LINCOLN — Nebraska closed out its fiscal year with more money than expected in the state coffers.

State revenue officials reported Friday that state tax collections for the year ended June 30 topped the most recent revenue forecast by \$37 million. Net tax receipts for the year were \$4.567 billion.

LINCOLN JOURNAL STAR

Regents give Bounds authority to hike tuition, if necessary

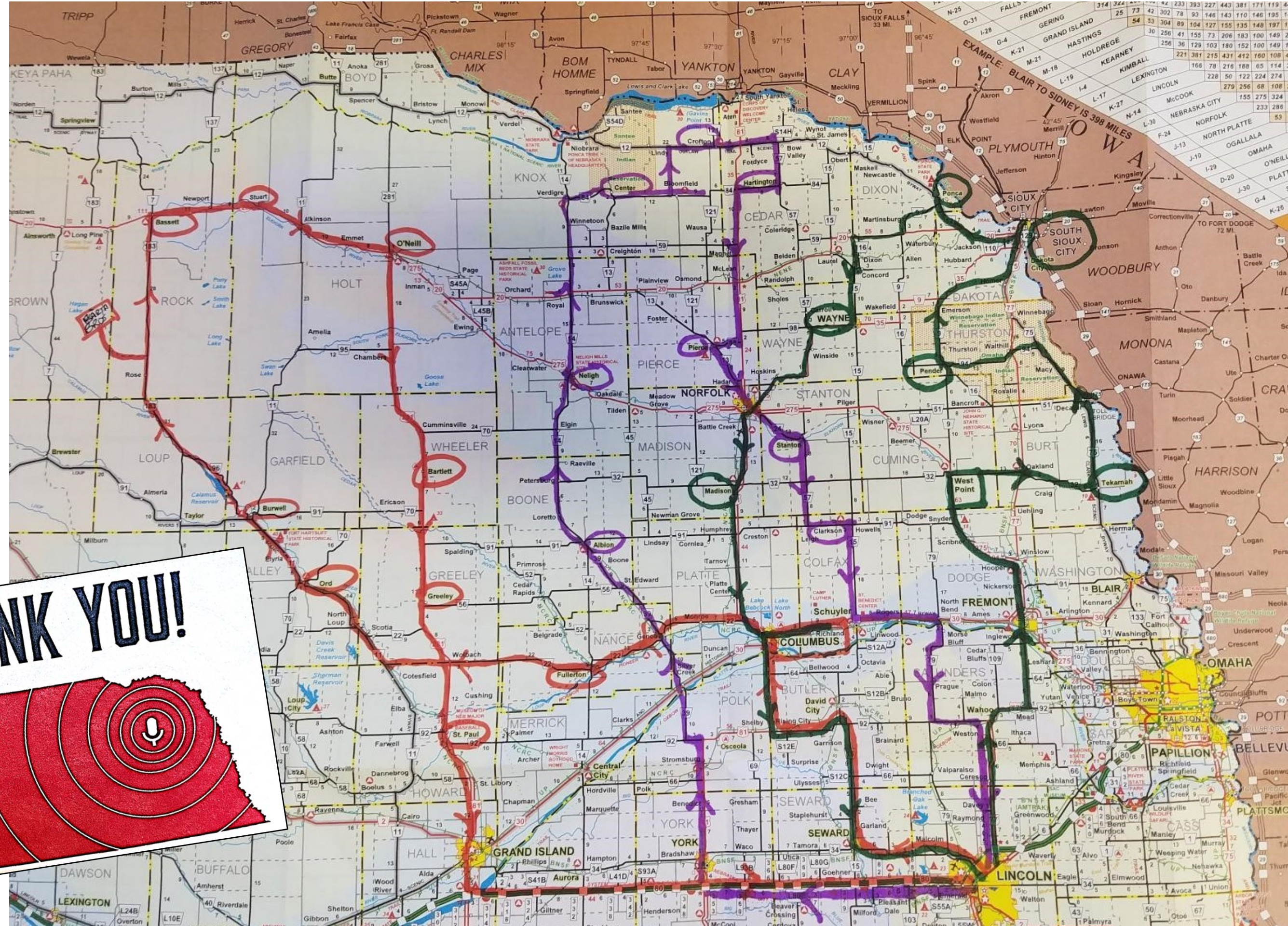
CHRIS DUNKER Lincoln Journal Star Jun 28, 2018 (0)



University of Nebraska President Hank Bounds was given the power to implement a midyear tuition increase should declining tax receipts result in the state withholding a portion of the university's state appropriation.

"I hope we don't have to," Bounds told the NU Board of Regents on Thursday. "We will only implement it if there is a need to make another midyear rescission. We need that flexibility because we are out of quick options."

Northeast Nebraska Listening Tour July – August 2018



**Northeast Nebraska
Listening Tour
July – August 2018**



Listening Tour Feedback

Northeast Nebraska



Collaboration between educational institutions



Trained workers in the beef industry



Water quality and access to safe water



Science and agricultural literacy



If metropolitan America is to drive national prosperity, metropolitan areas will need a healthy and sustainable rural economy and culture.

Likewise, if rural America is to flourish, it will surely depend upon vibrant, well-functioning cities and suburbs.

-Brian Dabson, 2007

IN OUR
GRIT
OUR **GLORY**TM



#InOurGritOurGlory